

SOFAR
T U D I O R C H I T E C T U R E R E S E A R C H

Hostal Del Sol

BCN

.....
■ Terrace apartment; Short term habitat in the Gothic quarter
.....

.....
Hostal del Sol became a point of departure of the firm's practice in BCN, a real state investment, an opportunity to incur in the short term business rentals as financial support and as marketing strategy of the firm to search for possible clientele.

Owning the space since 2005, After 3 years owning the space, this effort to document the complexity and intensity of the design process and site works give us the chance to review the project from different perspectives and to share our thinking: Each project should function as a laboratory. As architects and designers we follow up our design maybe a few weeks after the client moves in; but we rarely get a feedback of the experience of the user after our designs. The multiple uses of Hostal del Sol have given us the unique opportunity to test our architectural ideas with the short term inhabiting experience of the space by diverse users and other occupants including us. Furthermore; learning, rethinking and incorporating this valuable information in our design process.
.....



■ SOFAR
WWW.ESPACIO-SOFAR.ORG

STUDIO OF ARCHITECTURE AND RESEARCH

■ STUDIO

A network of multidisciplinary spaces oriented towards design and research...

...A Studio more than an office, where research is always present, favouring the shift of paradigm; a space more than a place, a pursuit of opportunities through a continuous flow of time, resources and collaboration. A working process more than a way of working, based on formulating strategies, transforming observation, juxtaposing information, knowledge and practice. In short, questioning, designing, testing, editing, and materializing as an attitude.

■ OF

ESPACIO ARQUITECTURA

Architecture_Landscape Design_Urban Planning_Theory and Criticism

Juan Carlos Sánchez Tappan

jctst@espacio-sofar.org

ESPACIO DISEÑO

Interior Architecture_Temporary Installations_Furniture and Window Display Design

Dafne de la Mora

dafne@espacio-sofar-org

ESPACIO HABITAT

SOFAR's Habitable showroom in BCN_

Branding_Advertising_Styling

info@espacio-sofar-org

■ ARCHITECTURE

As architects, we move from a world of concepts and ideas to a world of concreteness; we go back and forth, facing multiple necessities, contrasting different points of view, and negotiating with various parts within time, budget, and technical constraints. Each building process offers an opportunity to materialize ideas, transform spaces in experiences, but most important to translate what the site wants to be in a new lifestyle.

■ RESEARCH

From the architectural perspective we define knowledge as the juxtaposition of research, teaching, and practice, nurtured by a continuous flow of resources and collaboration.

A knowledge-based methodology with which to transform observation into design.

We are Mexican/Spanish architects and interior designers, partners of SOFAR, Studio of Architecture and Research, practicing and teaching in Spain and currently extending our practice back to Mexico. We have worked in Architecture, Interior Architecture, Landscape Design, Urban Planning, Temporary Installations, Theory and Criticism, disciplines and activities that have been part of our field of work in Barcelona, London and México D.F. for more than a decade.

As practicing architects we have built up a network of diverse areas of expertise, with experience on different scales, and with an infrastructure of long-distance cooperation.

Our working process is informed by curiosity, passion, and criteria of excellence, fostering integral design embracing architecture and interiors, remodelling of historical sites, landscape, sustainability and environmental design with collaboration favouring the interchange of ideas, experimentation and a multiscale approach.

Research is crucial to the SOFAR philosophy, generating an appreciation of urban culture that continuously nurtures and updates our understanding of the different disciplines. Our research interests and our work on Alternative sustainable housing; Tourism and new urban Interiors; Technology and resistance; The architecture of urban densities and accumulation; Public space in relation to art, architecture and the city; Incubation and working environments have helped us rethink notions of sustainability, recycling, renovation, integrative design, interior & urban design/development.

On teaching, we are directly involved in directing and participating in undergraduate and postgraduate programs. We have benefited from our collaborations with prestige institutions, universities and clusters in Mexico, USA, Canada, Spain, UK and Taiwan.

■ HAVE A LOOK AND ENJOY



■ LEGEND / LEYENDA

.....
A WAY OF ORGANIZING OUR WORK
.....

■ PROJECTS

A process where ideas are formulated, developed and tested to be materialized into products and experiences vs spaces. Observation, passion, and commitment as an attitude.



■ COMPETITIONS

For us, an opportunity to rethink, experiment, and transmit our ideas, formulating a statement. Advertising and provocation as a strategy.



■ COLLABORATIONS

Sharing of knowledge, negotiating, grouping.

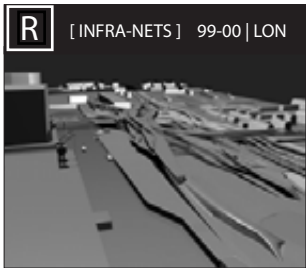


■ RESEARCH

A knowledge based methodology to transform observation in design.



■ WORKS



Index

07.2008

■ CONTENTS

8 / 11

INTRODUCTION

12 / 15

LOCATION

18 / 21

PRECEDENTS

24 / 33

APPROACH

36 / 47

PROJECT

50 / 119

SITE WORKS

120 / 123

POST EDITION

124 / 125

COST AND PAYMENTS

128 / 129

MAINTENANCE

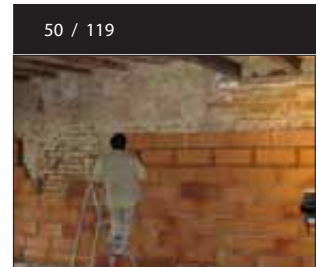
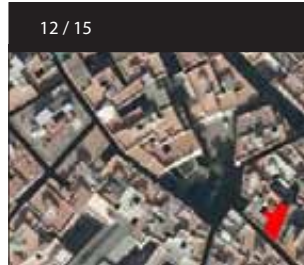
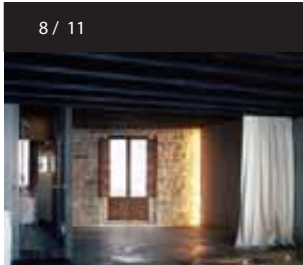
132 / 143

INVENTORY | COLLABORATORS | DIRECTORY

146 / 147

CONCLUSION & ACKNOWLEDGMENTS

■ VISUAL CONTENTS



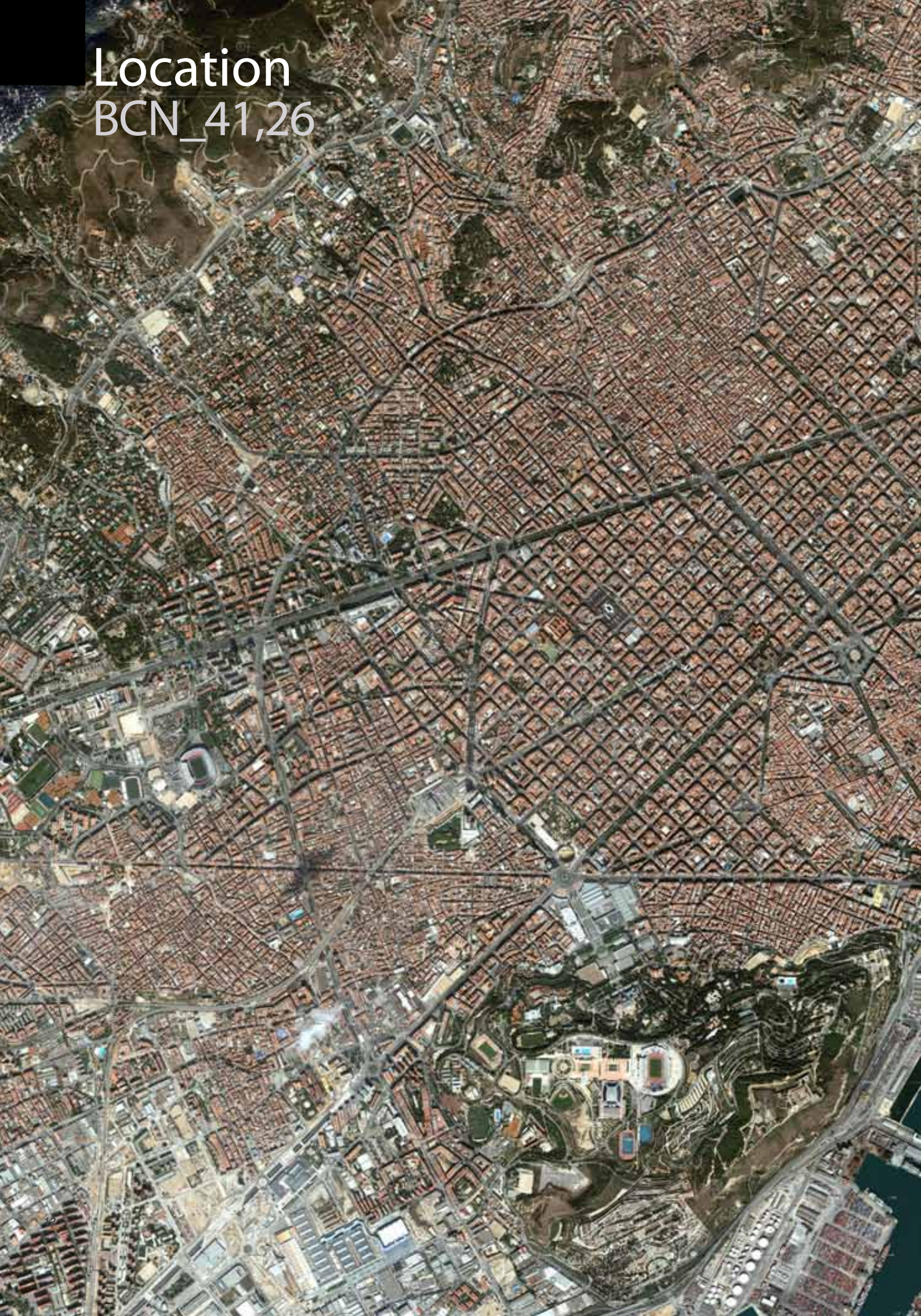
Hostal del Sol

BCN





Location
BCN_41,26





■ L.E.P

■ H.O.S

■ SOFAR



■ Hostal del Sol Street



■ Shot from the terrace aiming towards Trafalgare Street

■ CONTEXT

Ciutat Vella, Gothic Quarter

Density: 251,79 inhabitants per hectare.

Located in the centre of the city in the neighbourhood of the Gothic Quarter limiting with el Borne and Port Vell.



■ HDS Aerial view



■ Plaça dels Traginers, Torre Romana

■ SITE

Hostal Del Sol 3-5, 2-1, Barcelona 08002 The apartment is embedded in a catalogued historical building from 1736 in Ciutat Vella, where the street of Hostal del Sol meets the plac Trainers and roman Tower. Located a few meters from the Edificio de Correos; neighbouring Sta. Maria del Mar, the Museum of History of BCN, the yachting area, and plaza Sant Just.

The area is dominated by a major set of landmarks, restaurants, galleries, museums, etc.

The apartment is oriented to the north-east and south-west





Precedents

04.2005

■ SITE

The edifice was built in 1736 with timber structure that support Catalan vaults. Stone on façade and party wall, brick inner walls, wood ceilings and tiles as flooring.

The apartment unfolds through two joined buildings. The foyer, in number 3, lighted and served by an inner patio staircase; and the rest of the apartment and terrace in number 5 lighted through the front and rear facades.

■ PROGRAM

Jan 2005:	Concepcio Vila Calverons
Jan 2005- July 2005:	Roberto Bennini, Montopolo Immobiliaria:
Jan 2005:	Housing apartment: WC, Cuina, Sala, Rebedor, 2 dormitoris, 1 alcoba, 2 vestidores, 1 safareig, sala d'estar, terrassa
Jan 2005- July 2005:	Technical Architect: Joan Batiste Simplicio
Budget:	6790 euros 33 m2 of inner walls demolished 49,20 m2 of ceilings demolished Water installations of kitchen and little bathroom dismantled Iron structural reinforcement welded and built in situ. 1 WC and 1 full bathroom, kitchen, living room, vestibule, 2 dormitories, common space, terrace.



■ H.D.S 3-5_2-1_april 2005





Approach Background

■ SITE



■ BCN 1893-1858



■ BCN walls_1260_1640 Atlas of public spaces.



■ BCN Streets

The territory of Ciutat Vella is defined by the wall that contained the city until 1859. Degraded during the 70's and regenerated during following decades, the operations of demolition and substitution evolved in enhancing and conservation interventions.

works cited: http://es.wikipedia.org/wiki/Monasterio_de_Sant_Pere_de_les_Puel%C2%B7les

■ CLIENT

.....
Espacio Habitat-SOFAR

■ PROGRAM

.....
TERRACE APARTMENT AS DOMESTIC RESORT IN THE CENTRE OF BARCELONA
.....

Apartment area: 89 m2

Terrace: 16 m2 Owned by the building neighborhood council but for private use of the client and owners.

Services:

Designer Kitchen

Outdoor shower

Prototype opening folded iron door Water, Electricity and Gas installations

Relax and Sleep: Main bedroom: 15.4854 m2

Second double bedroom: 7.3725 m2

Bath rooms / Designer Bath and shower: 8.6786 m2

Play:

Outdoor shower

Work:

wifi service

small office home office: 8.3139 m2

.....
■ 07-05 | BCN

OWNERS: JUAN CARLOS y DAFNE

CLIENT: ESPACIO HABITAT, Habitable

showroom of SOFAR in BCN

■ 07-05 01-07 | BCN

JUAN CARLOS, DAFNE, CARLO,MIKÉL

■ 02-07 10-07 | BCN

JUAN CARLOS, DAFNE (Pregnant), CARLO

■ 9-06_8-07

ESPACIO HABITAT BCN

Temporary Users:

UK: 43

FRENCH: 27

USA: 17; DUTCH: 12

SPANISH: 8; AUSTRIAN: 7; CANIDIAN: 6;

SWEDISH: 4; DANISH: 4; ISRRaelI: 3; RUS-

SIAN: 2; YUGOSLAV: 2; EGYPTIAN: 2

■ 9-07_8-08

ESPACIO HABITAT BCN

Temporary Users:

UK: 54; SWISS: 23; USA: 21; FRENCH: 13;

DUTCH: 12; DANISH: 11; GERMANY: 7; BEL-

GIUM: 4; CANIDIAN: 4; SWEDISH: 4; NORWAY:

4; LUX: 4; LIECHTENSTEIN: 4; ROMANIAN: 4;

FINLAND: 3; SPANISH: 2

■ 10-2007_

JUAN CARLOS, DAFNE, CARLO,MIKÉL

BCN

■ COST

.....
660 E/m2 aprox

■ 09-2008 _

PROGRAM (To be continued):

Services:

Exterior storage: 0.86 mm2

Interior storage: 3.52 m3

Domotics

Relax and Sleep: Music Lounge

Work:

small office home office: 8.3139 m2



■ | BCN

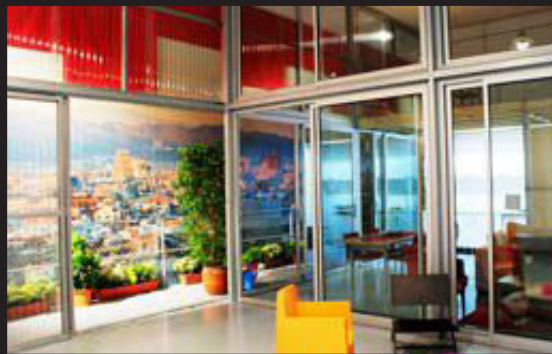
■ 2009

JUAN CARLOS, DAFNE, CARLO, MIKÉL
MEXICO

■ REFERENCES

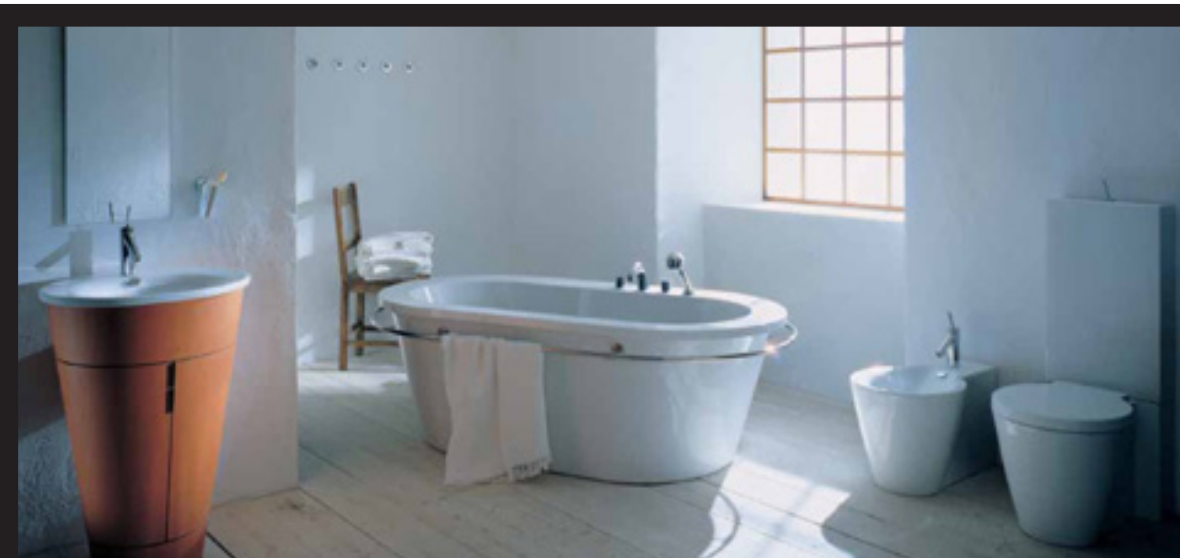


living room_Goetz Stoeckmann, Gabriela /



APTМ 2005_Lacaton-Vassal |

■ ENVIRONMENT



bathroom_starck /



■ OCCUPATIONS



Vina Tondonia_Rioja_Zaha Hadid|



loft|



kitchen /



terrace|



Cement renderings/



outdoor wood/



cement paving/

■ MATERIALS



designer kitchen /



curtain partitions/

■ OBJECTS



prefab concrete vaults /



sliding doors /



stark 1/

Influences

Urban discources and main events

NEWS AND EVENTS THAT SHAPE OUR TIME

■ FINANCIAL

2005 July 15: 1 Euro = 1.20860 US Dólar
<http://www.enlacesfinancieros.com/divisas>

2008 July 30: 1 Euro = 1.56993 US Dólar

The Euribor is the interest rate mostly used among financial entities in the European bank market to borrow money from each other for loans. This rate affects most of the mortgages in Spain.

2005 July: 2.68%

2008 July: Euribor = 5.409%

http://www.lavanguardia.es/premium/publica/publica?COMPID=53506833775&ID_PAGINA=22088&ID_FORMATO=9&turbourl=false

IPC, Consumer prices index

2005 July IPC: 3,3% inter annual

2008 July IPC: 5,3%

2008 Average cost per built m2 in the city of Barcelona of apartments ranking between 80-100M2 surface: 4617 euros/m2
<http://casas.trovit.es/135507/precio-vivienda-barcelona>

■ NEWS

2005

<http://www.lavanguardia.es>

14/04/2005

Poco espacio, gran negocio

ÓSCAR MUÑOZ - ...años. Fuentes del sector cifran su renta mensual media entre 450 y 700 euros y el precio de compraventa entre 150.000 y 200.000 euros. El mercado de los minipisos -estos días de actualidad porque el Gobierno estudia cambiar las normas...

http://www.lavanguardia.es/premium/publica/publica?COMPID=51264862009&ID_PAGINA=3746&ID_FORMATO=9&PAGINACION=&dummy=dummy?urlback=

El euribor sube al 3,105%, máximo desde el 2002

09/10/2005

Ciutat Vella, por las nubes

SILVIA ANGULO - ...sobre todo a Ciutat Vella, que ha experimentado un crecimiento del 35,7% respecto al mismo periodo del año anterior, y donde un piso de 62 metros cuadrados cuesta 710,85 euros al mes. Unos 111 euros más que a principios de año. Este aumento de precios se debe...

http://www.lavanguardia.es/premium/publica/publica?COMPID=51264895136&ID_PAGINA=3746&ID_FORMATO=9&PAGINACION=&dummy=dummy?urlback=

17/02/2006

El liderazgo de Barcelona

SILVIA ANGULO - ...relevantes. Así Barcelona es la sexta ciudad del mundo en la organización de reuniones internacionales, igualando a Singapur. Además, la capital catalana continúa siendo la primera en calidad de vida, ocupa la quinta posición en la clasificación europea...

http://www.lavanguardia.es/premium/publica/publica?COMPID=51264489452&ID_PAGINA=3746&ID_FORMATO=9&PAGINACION=&dummy=dummy?urlback=

El precio de la vivienda de segunda mano sube un 12% en el área metropolitana de Barcelona

■ EVENTS

2005-2006

Construmat 2005: APTM, "la vivienda mínima" http://www.elpais.com/articulo/sociedad/Apartamentos/minimos/elpepucul/20050322elpepusoc_6/Tes
http://www.recetasurbanas.net/ref_b/b4/b4_esp.php
<http://blogivive.com/2005/06>

■ ARCHITECTURE | URBANISM

European Union Prize for Contemporary Architecture Mies van der Rohe Award
Nederlandse Ambassade te Berlijn
Netherlands Embassy Berlin

Year construction completed: 2003 - Berlin (Germany) - Rem Koolhaas, Ellen van Loon
<http://www.miesbcn.com/en/award.html>

European 7

Theme: Sub-urban challenge, urban intensity and housing diversity http://www.european-europe.com/pages_eng/session/session7.php

Pritzker 2005: Thom Mayne

Pritzker 2006: Paulo Mendes da Rocha
http://www.pritzkerprize.com/full_new_site/Laureates.htm

Premio Nacional de Arquitectura 2006: Oriol Bohigas i Guardiola





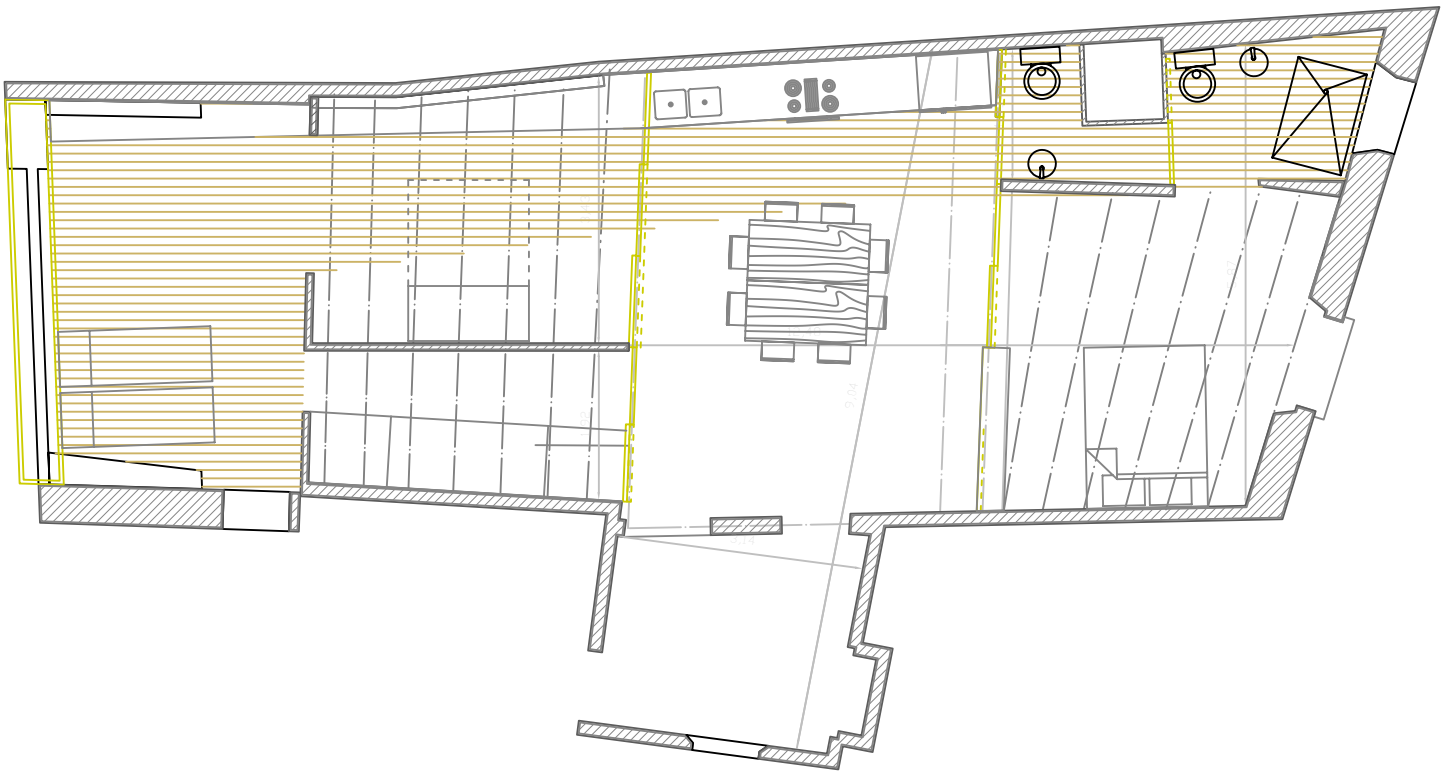
Project

Ciutat Vella Hostal del Sol

■ FIRST PROPOSAL

Built surface: 91.44 m²

Useful surface: 78.19m² + 15.28m² de terraza



■ LANDSCAPE

Temporary habitat: Short and medium term occupation. Sleep 6

Interior Landscape: Extension of the terrace inside of the apartment. The timber floor, outing shower and palms bring in a beach atmosphere.

Service: A servicing installation strip runs through the apartment generating a wet area.

■ REFERENCES

.....

<http://www.friendlyrentals.com/>

When interventions occur in old historical places, it is very complex and difficult to control the design process and site works with the conventional linear method of drawing the project in the office in order to be executed in situ afterwards.

On the contrary, as site works evolve and we constantly find new situations, the design needs to change several times and be updated in real time what forces architects to design using the site as a 1:1 study model.

In this liquid process, our work as architects moves from the attitude of a lecturer, concern of transmitting his text through his speech to an orchestra director, whose role is to listen and observe constantly in order to simultaneously direct and create.



■ URBAN SETTINGS V. LANDSCAPE

The street Hostal del Sol gained its name after the reputation of one of the first Hostels in the City, well known back then as it also operated as warehouse.

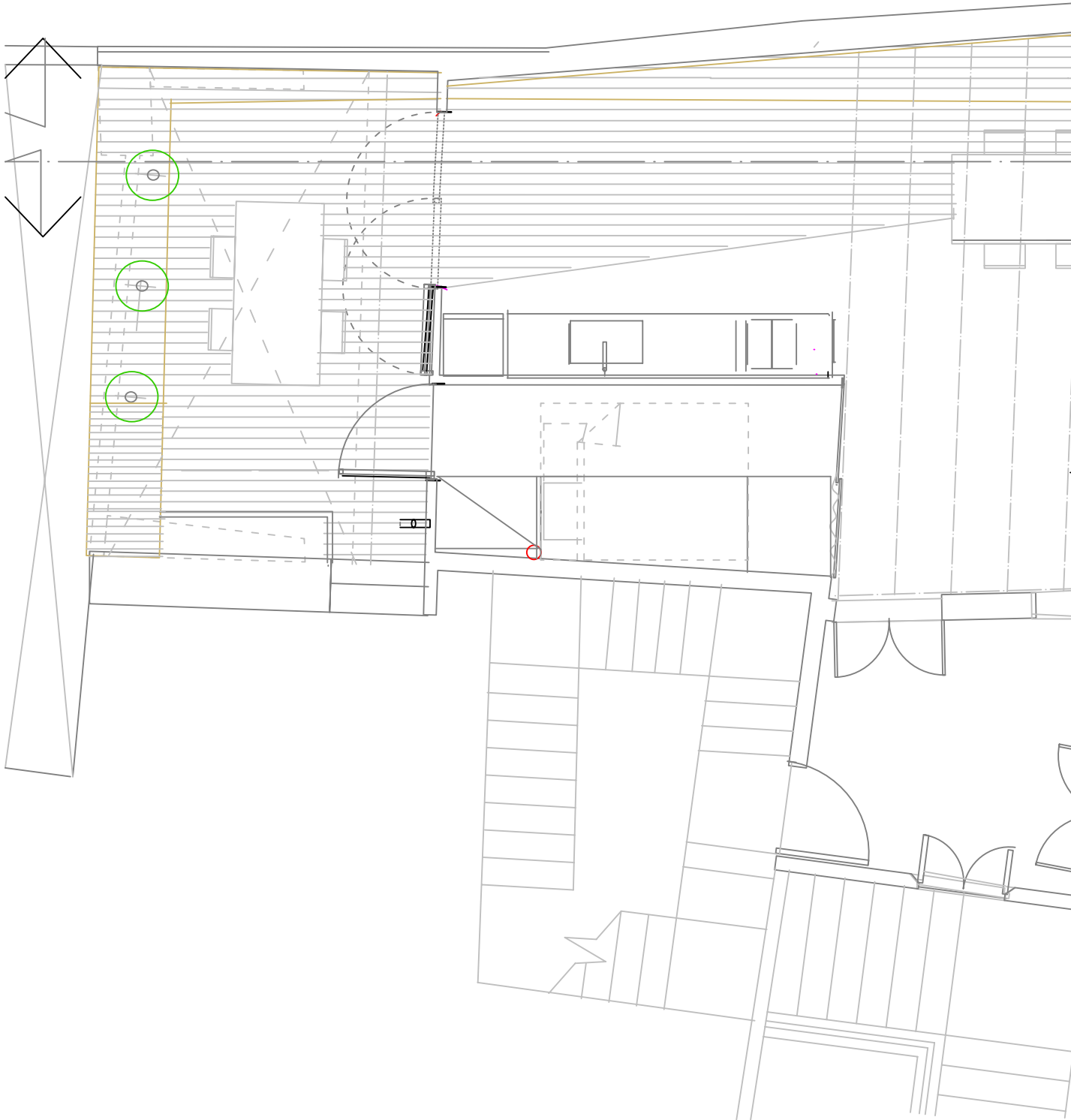
Plaça dels Traginers, named because of the mule drivers and Honey makers that used to live here.
http://www.bcn.es/turisme/castella/turisme/llocs/13_0.htm

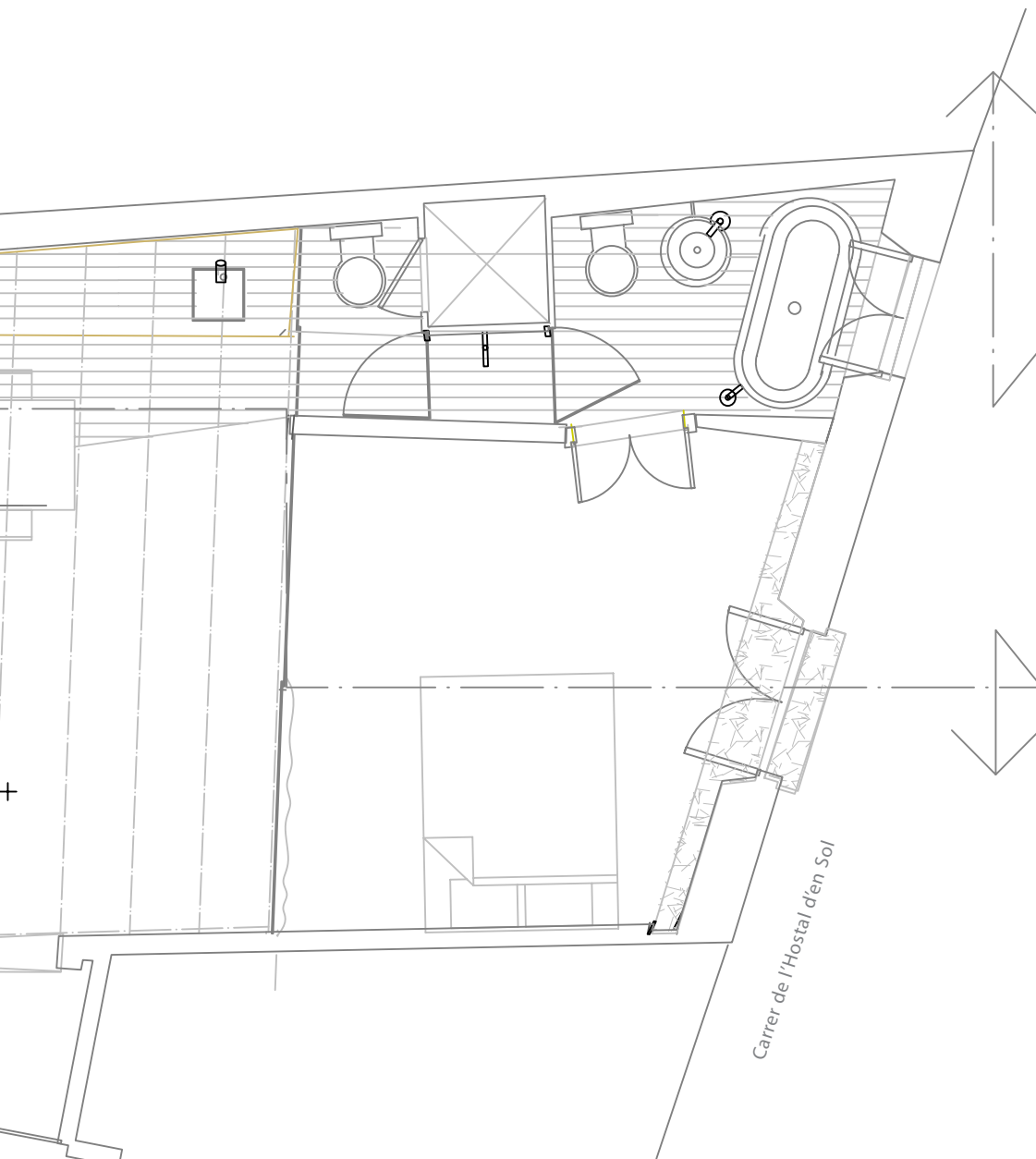
■ FINAL PROPOSAL

Built surface: 91.44 m²

Useful surface: 78.19m² + 15.28m² de tarraza

■ FLOOR PLAN





■ DESCRIPTIVE MEMORY

The project increases the terrace space from 16m² to 37m² extending the wooden floor strip from the terrace outside to the bathroom area making a continuum space between the exterior and interior and bridging the front and rear façades.

The perception of the interior space is also increased by the decision of using a diagonal to extend inside the wood paving thus stressing the perspective of the interior.

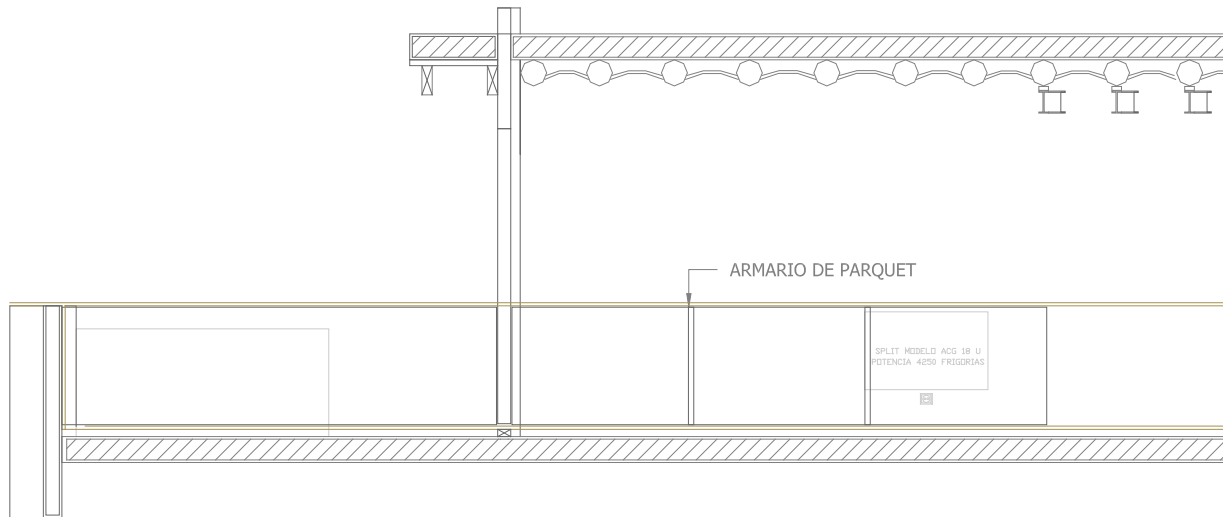
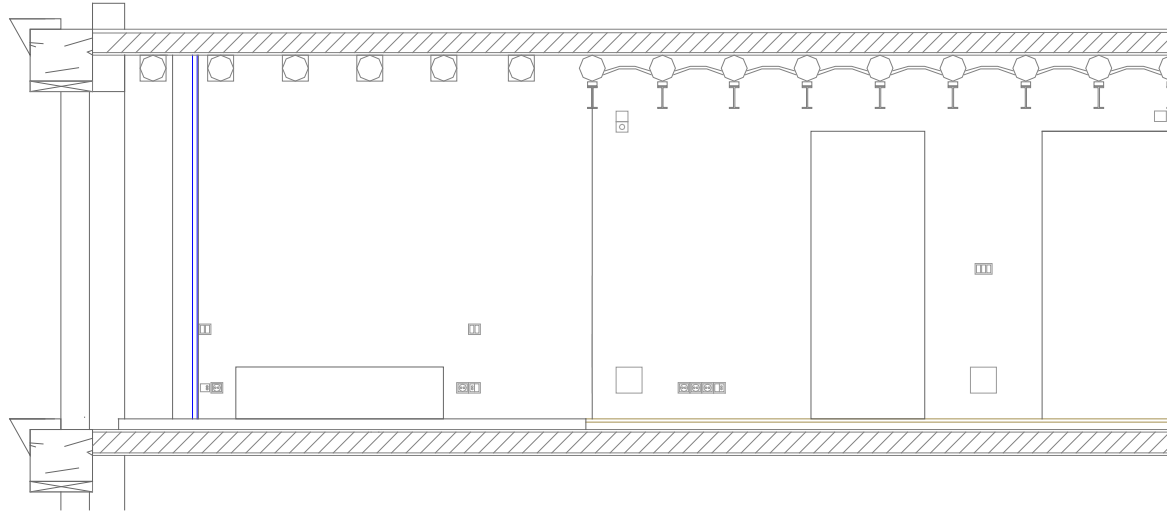
The former distribution is redefined into an open common space. The interior design embraces the old and the new, balancing works of rehabilitation and restoration on original doors, windows, iron fences and floors with all the requirements for a contemporary living including double glazing, wireless internet connection, and installation for access and distance control.

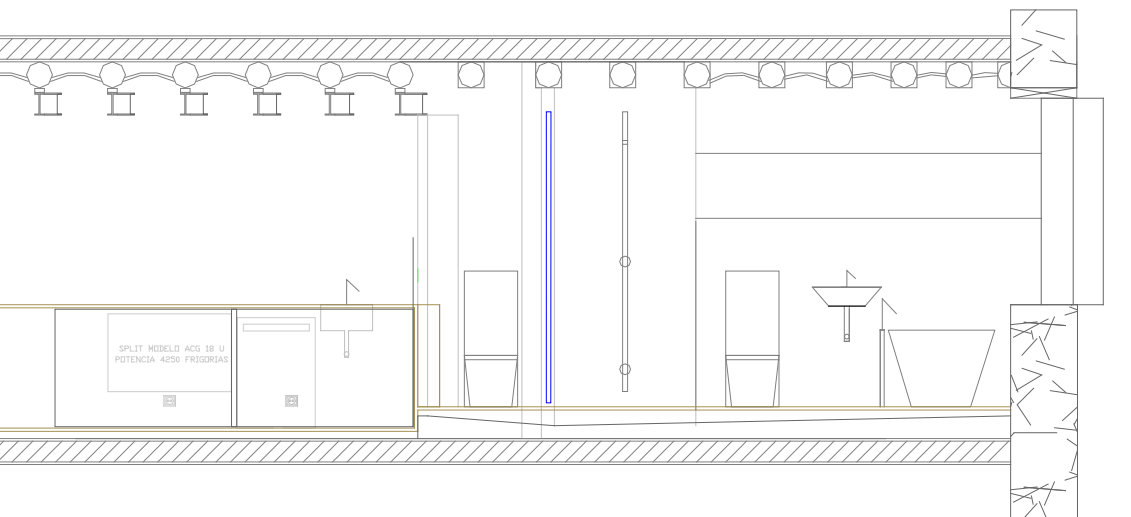
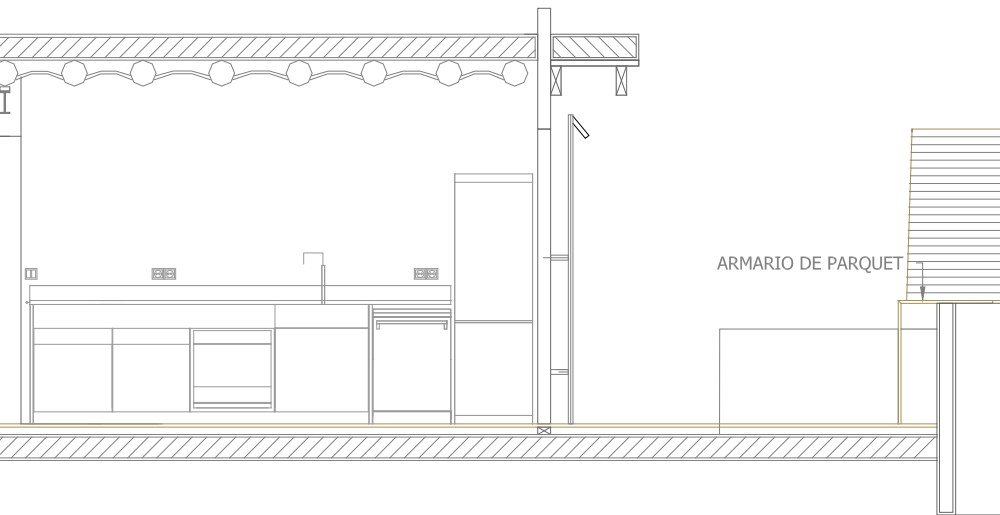
Special emphasis was given on the care for detailing and the selection of the adequate designed furniture in bathrooms, kitchen and lighting that could highlight the stone façade, original exposed vaults and timber structure, wood ceilings, and brick walls in the foyer, and bathrooms.

Finally, the flat is redefined as a terrace apartment inside the Gothic Quarter that remembers the proximity with the beach.

■ FINAL PROPOSAL

■ ELEVATIONS





■ TO BE CONTINUED

■ CIUTAT VELLA

Master Plan for the Ciutadella's Park

The real state market in the Ciutat Vella district will be positively affected with the coming Master Plan for the Ciutadella. With the main objective of organising the park, moving the actual Zoo of Barcelona and bridging the existing tracks of the Franca Station in order to connect the Sant Joan boulevard and the park with the beach of La Barceloneta.

http://www.bcn.es/urbanisme/barcelona_progres/barris/verd_estrategic_0.htm

Enhancements of the "The Placa de Tranguiners"

An important area adjacent to the roman wall and tower neighbouring the Placa de Tranguiners will be improved with the coming urban arrangements. Hostal del Sol is one of those block within the red area of interventions.

http://www.bcn.es/urbanisme/barcelona_progres/barris/ciutatvella_0.htm

<http://www.fomentciutatvella.net/cat/>



Barcelona, Transformación, planes y proyectos

■ WELL

During the site works a shaft was found, for decades it embraced a well that serviced with water the old housing apartments in absence of water pipes or installations. No longer in used, it goes through the whole building allowing possible artistic interventions.

A sound light well installation is thought for the near future rethinking its source.



8-08_28_well



8-08_28_well



8-08_28_well

■ STORAGE PARQUET FURNITURE

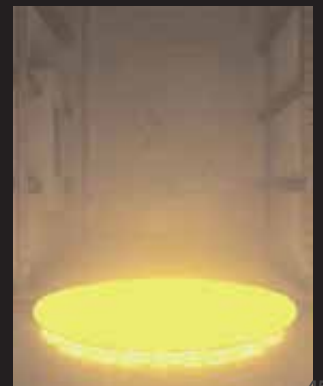
In order to provide enough storage space without compromising the spatial continuum of the project, the parquet flooring fold up generating a working surface that frame sliding perforated metal sheet doors that cover air conditioning, electricity and laundry services.



■ RESEARCH

abovesun_the weather project tate modern_Olafur Eliasson olafur_eliasson_in Malmö

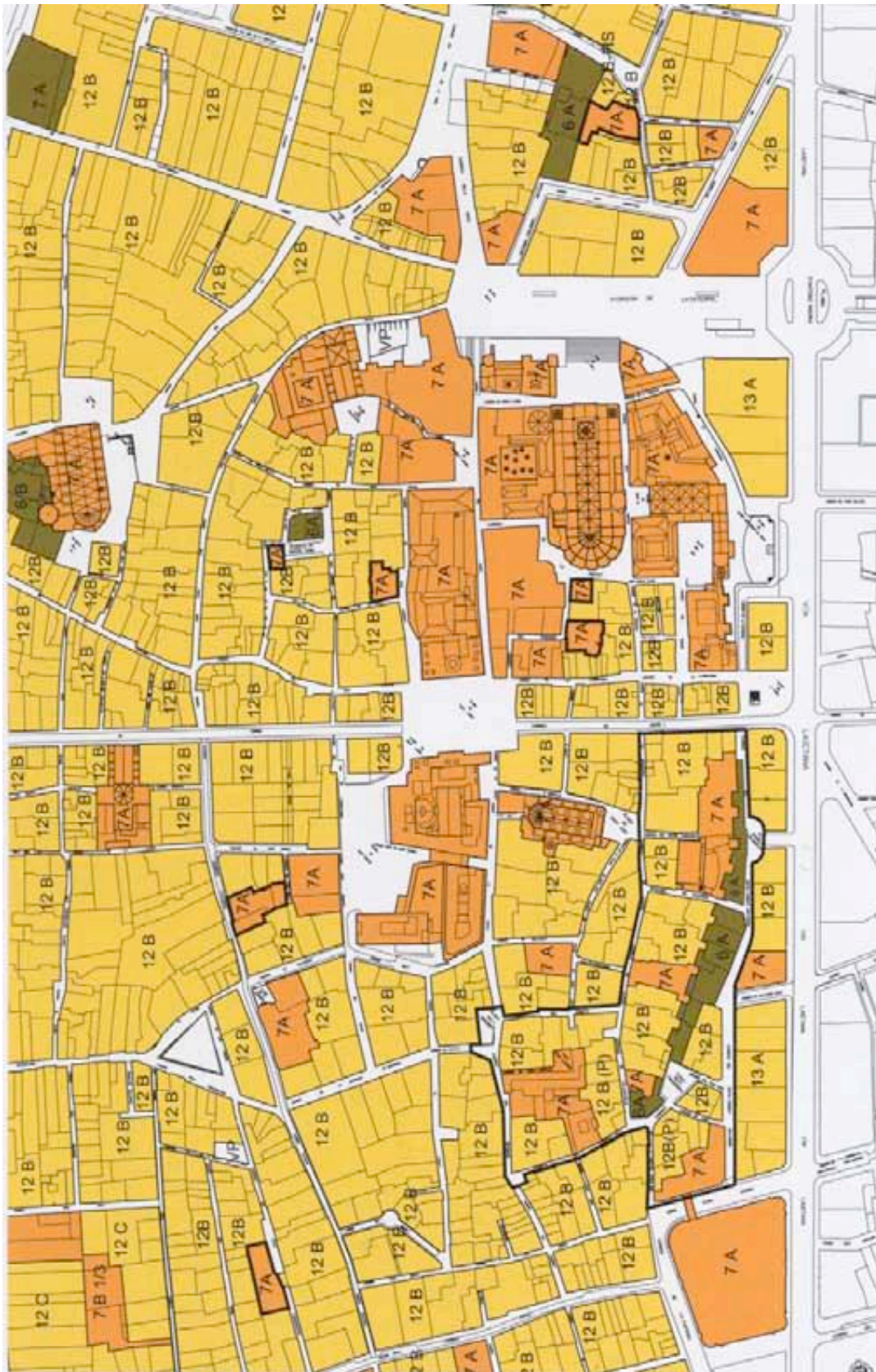
http://www.olafureliasson.net/selected_works.html

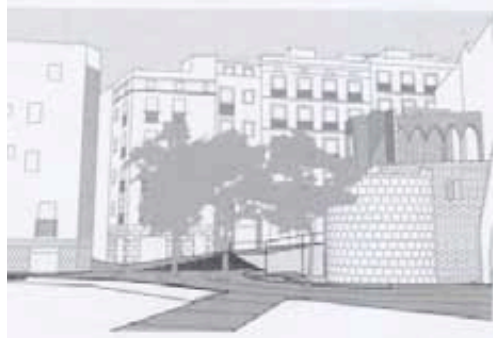
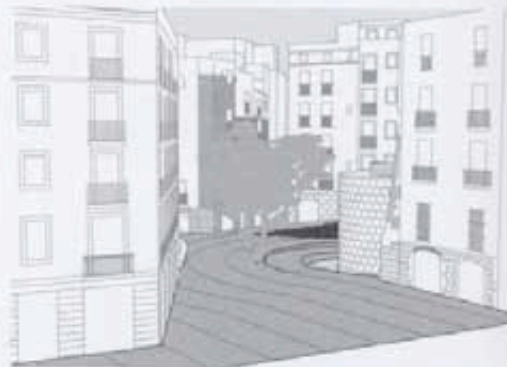


A sound light well installation

■ BARCELONA, TRANSFORMACIÓN, PLANES Y PROYECTOS

Transformation of Placa de Placa de Traginers_Josep Llinàs_BCN,transformacion planes y proyectos_p.222
Urban suturing balancing design and maintenance, vestiges of heritage and new uses









Site Works

Hostal del Sol 08.05_09.06

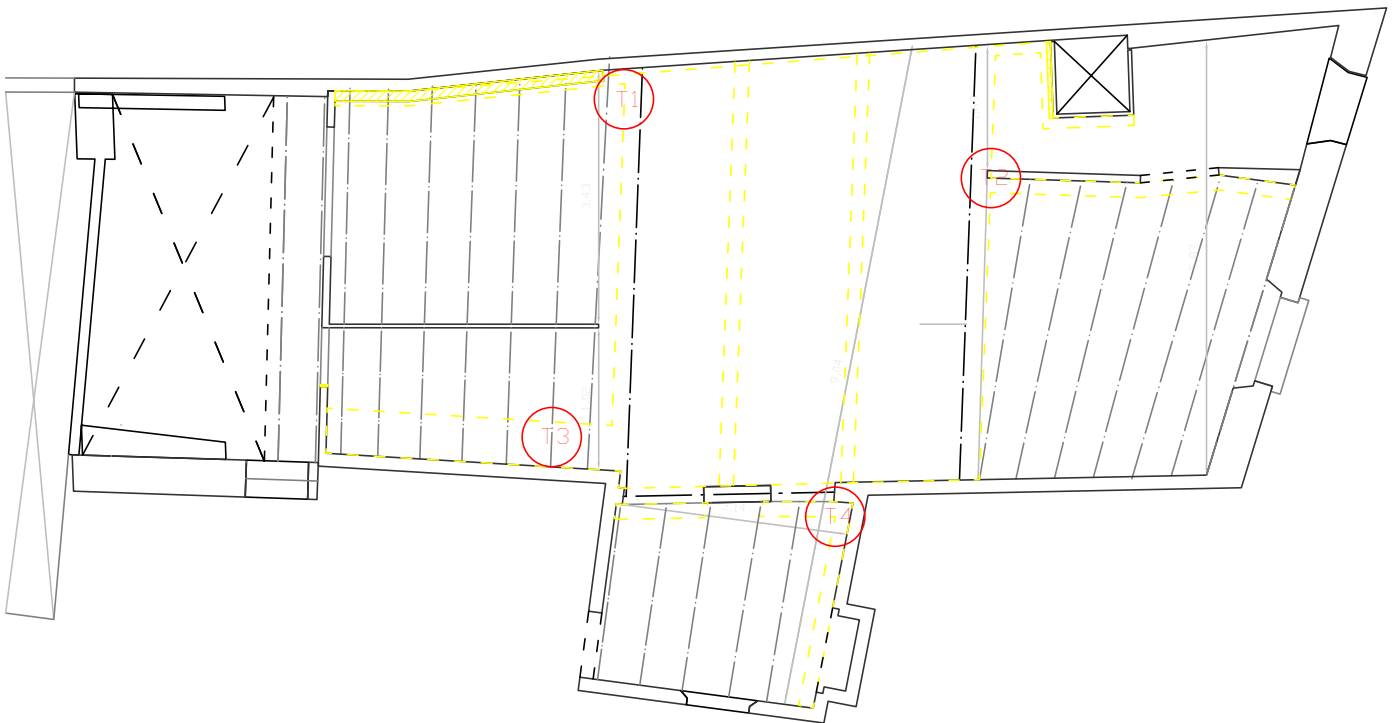
■ BEFORE AND AFTER



SEP 06

■ DEMOLISHED

6.93 m² of wall brick demolished
34.15 m² of cardboard ceiling including support structure
50-60m² of vaults removed in main bedroom and foyer according with testings







■ SEPT 05 - SEPT 06_main bedroom

Hiding vs Exposing
Covering vs Recovering
Speculating vs Intervening

The character of the space and its history demanded from all teams to work as craftsmen. In almost all cases our design was particularly thought for the site. New solutions were tested, a prototype fabricated, and countless hours invested solving all kind of details.

■ ADDED

0.80 ml extensión of brick wall in bedroom and kitchen
6 ml, 27 m2 of new brick wall (supermahon)



■ PROCESS

As a historical and catalogued building in Barcelona, the intervention fell in the category of major works and as a consequence a special permit from the city hall was needed for site works.

4-4-05

A structural reinforcement was done by Joan Batiste, technical architect with "Visat" number: ADI913. File: 01-2005L09610.
Client: Montopolo property developer, Roberto Bennini.

08-05_09-06

13 months of site works

12-05

31 teams involved, 71 persons

20-11-2006

Cedula de Habitabilidad given



Jan 05 _ before terrace



07-05 after terrace



Jan 05 _before kitchen



08_05_12 _ after bedroom



Jan 05_ dormitory alcoba



11-5_18 _after kitchen



4-06



3-06_23



02-07_12



3-06_8



11-06_14



10-06_23

■ PARTY WALL



■ FOAYER





■ BRICKWORKS

.....
Precedents

Suframmat
t. 93 351 60 74

Corpiño, S.A.
Francisco Ozuna Ojeda
e. fosuna@corpimo.com

Bogdan
m.669 365 427

In Situ
Ayner Lozada Cuellar
Wilmert
Sergio

■ TESTINGS: 08-05_4



T4_foayer



T1_kitchen-living_before

■ PAVINGS

Precedents
Margranit Marbres Andreu
t. 93 772 0258
e. margranit@groupoini2.com



11-05_4 foayer pavings



8-08-28 balcony



living bedroom before



bedroom_before kitchen



3-06_8 balcony



8-08_28 balcony

REMOVED AND RECOVERED

WALLS

50m² of plaster removed from brick walls
 54.2 m² of latex applied on brick walls
 25m² of brick wall cleaned and restored

116.1 m² of rendered wall surface, fine sanded textured Portland
 Finishings, screed white and grey cement with sanded matt look

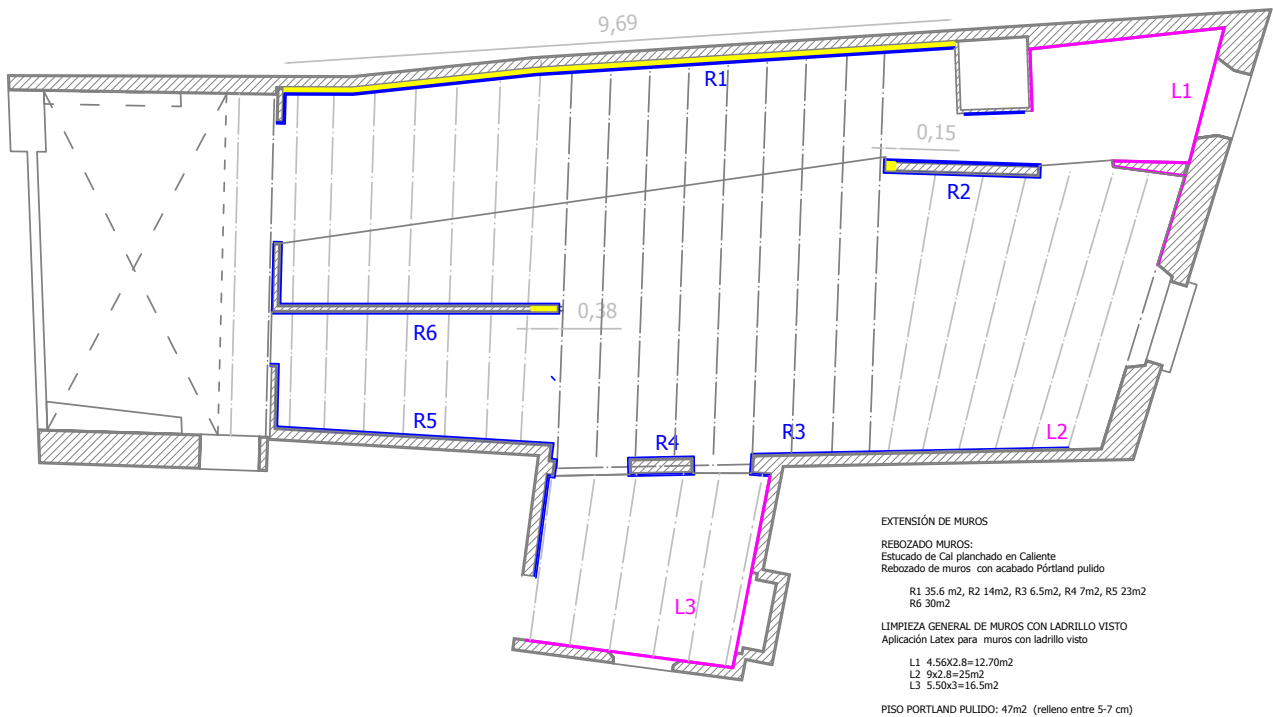


10-05_main facade-bedroom



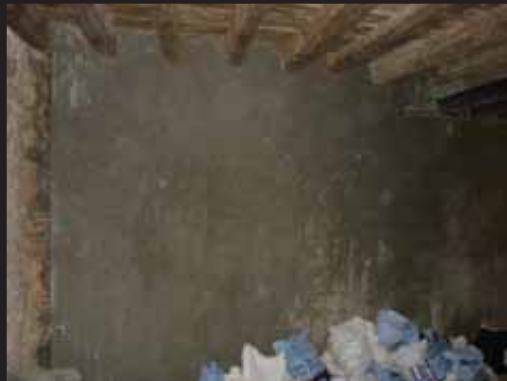
10-05_bedroom

CLEANING RENDERINGS 17-1-06





living bedroom before



bedroom_before kitchen

■ PAVINGS

PLANCHE 45.62 m²

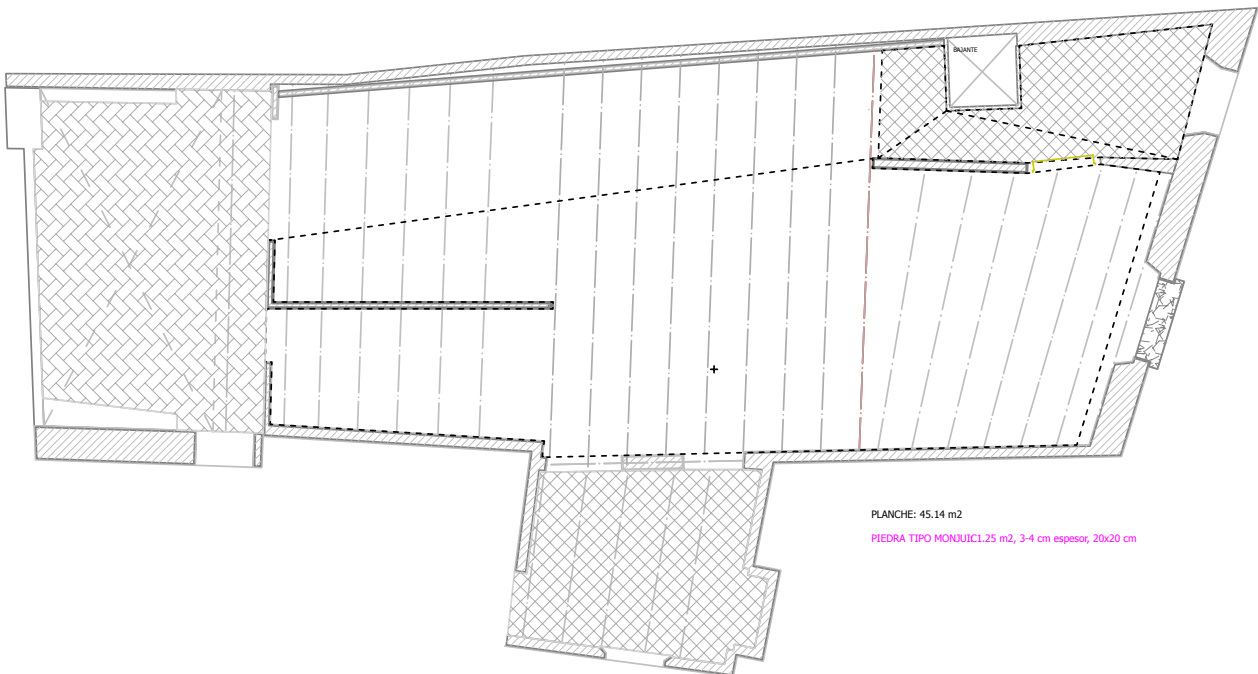


PLANCHE: 45.14 m²

PIEDRA TIPO MONJIC 1.25 m², 3-4 cm espesor, 20x20 cm

■ VAULTS AND CEILINGS

.....
Timber structure with wood ceilings and catalan vaults.
Some of the beams were covered with wood boxes
Wood ceilings in bedroom, bathroom and foyer.



08-05_4 bathroom



09-07_11_bathroom



08-05_4_main bathroom



8-08_22_main bathroom



10-05_31



11-5_18_foyer



308-05_4_bedroom



8-08_22_bedroom



08-05_4_main bedroom



8-08_22_main bedroom



08-05_4



11-5_18_IPN

■ PARTY WALL

.....
A new brick wall –tabique trasdosado- was built because of the very poor condition of the party wall. Portland cement used on renderings. A mixture of 5:1 white /grey cement used on finishing.



party wall_10-05



party wall-2_10-05



party wall-3_10-05



11-5_18





12-05_7



12-05_7



2-06_16



2-06_16



2-06_16

■ CONCRETE PLAQUE – PLANCHE

The first plaque had to be demolished as it was not properly built lifting up and braking consequently.



party wall_10-05



party wall-2_10-05



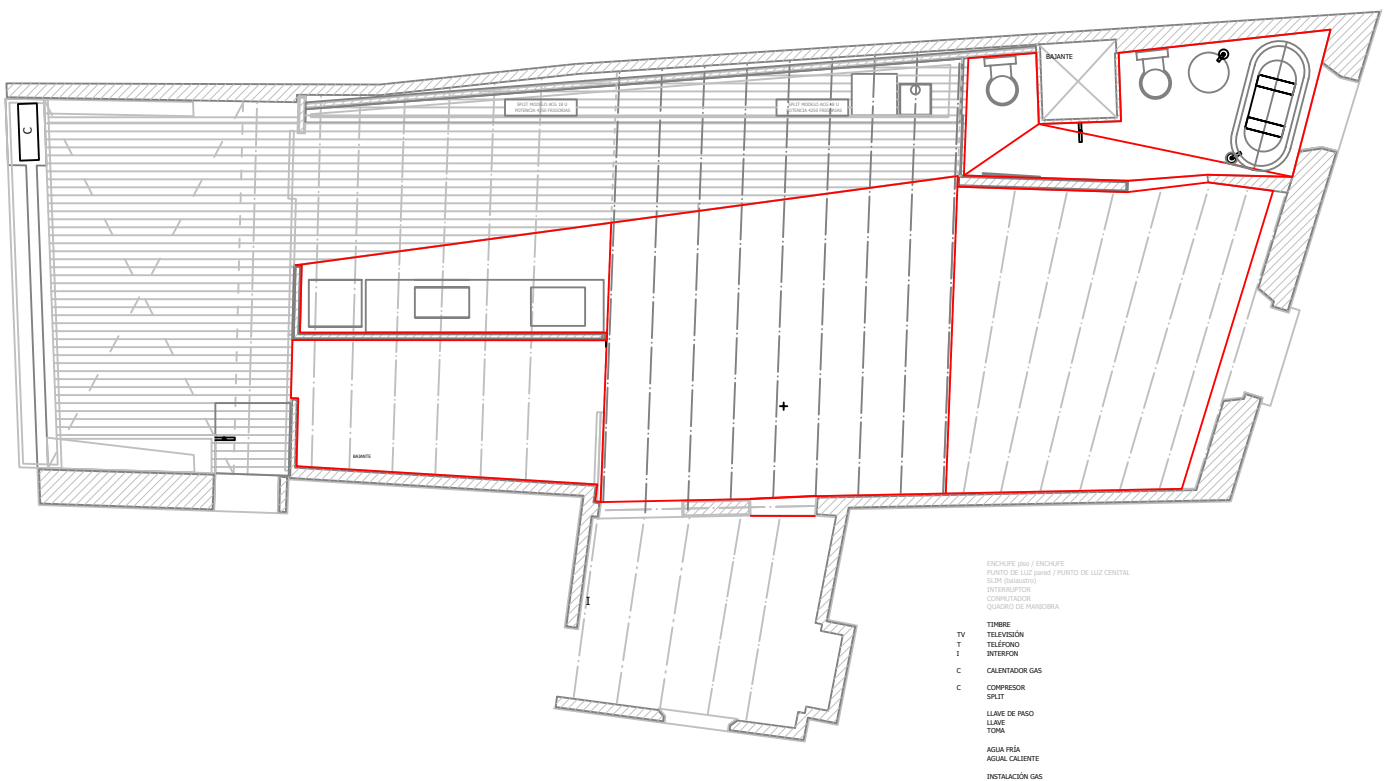
party wall-3_10-05



■ PLANCHE

PLANCHE 45.62 m2
PLANCHE PARQUET 15.9 M2

PLATO DE DUCHA 6.85 m2
132 euros (6,85) = 904.2 (2) = 1808 euros



■ SECOND PLAQUE

47m², of new concrete plaque - 4 areas

Manual testing each 60 cm

150 x 150 mm net rod linked to the timber structure through metal wire and headed screws of 100 mm embedded in timber beams

Sica glue as union bridge in areas with 4 cm thickness

Concrete proportion: 1:2:2; no retractile cement: sand: 10 mm gravel



3-06_8



11-06_14



4-06



10-06_23

■ BATHROOM

■ SHOWER PLATE

A big shower plate was built in within the area of the bathrooms.
 Water-prove fabric, thickness 4mm and double layered
 Built up with Light concrete and fine cement finishings.
 Area: 6.85 m2



8-05_4



10-05_bathroom window



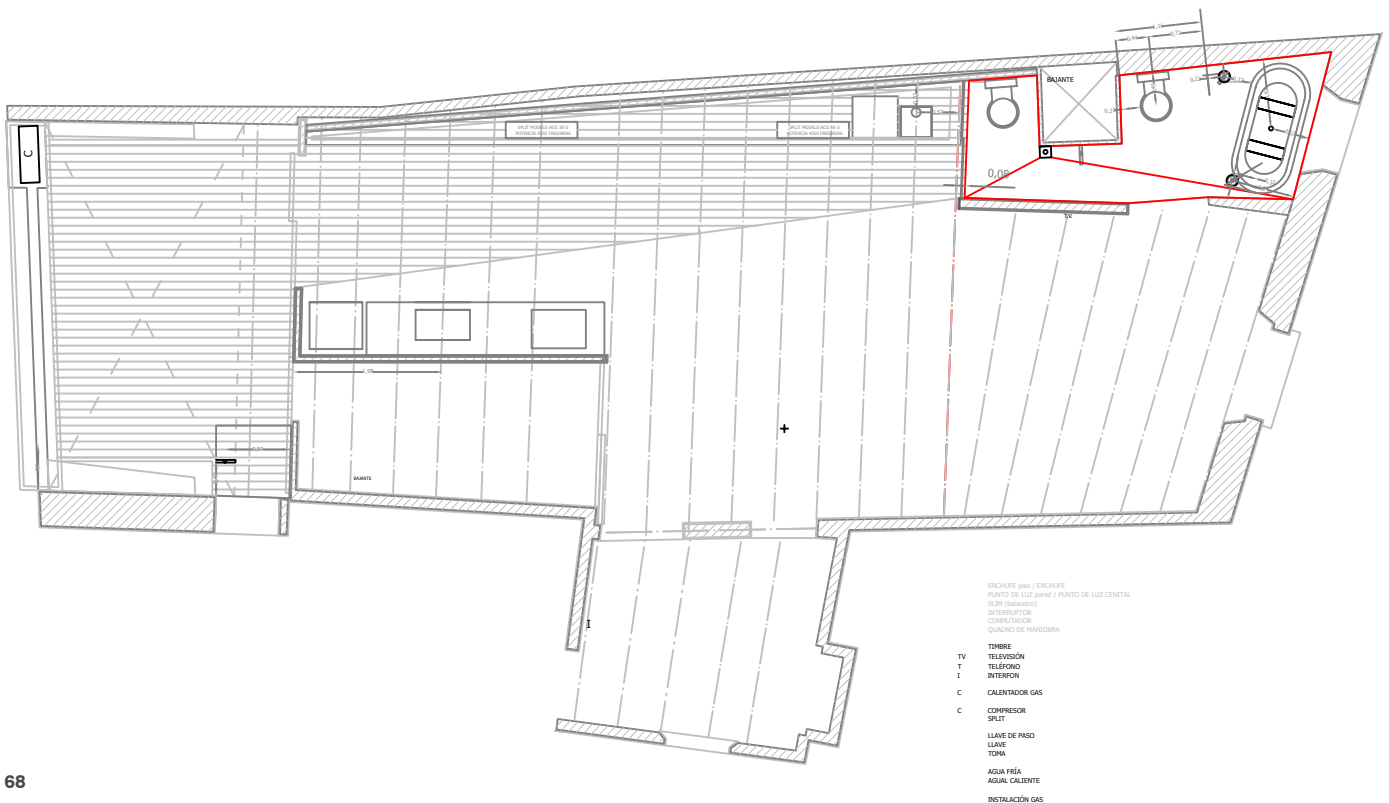
10-05_25b_pozo-bajante



2-06_16

■ SHOWER PLATE 13-2-06

PLATO DE DUCHA 6.85 m2
 132 euros (6.85) = 904.2 (2) = 1808 euros





10-05_bathroom



10-05_bathroom passway-vaults



3-06_8_plato de ducha



3-06_8_enlucido

■ INSTALLATIONS

.....

In Situ: Fabio Quesada Cuellar

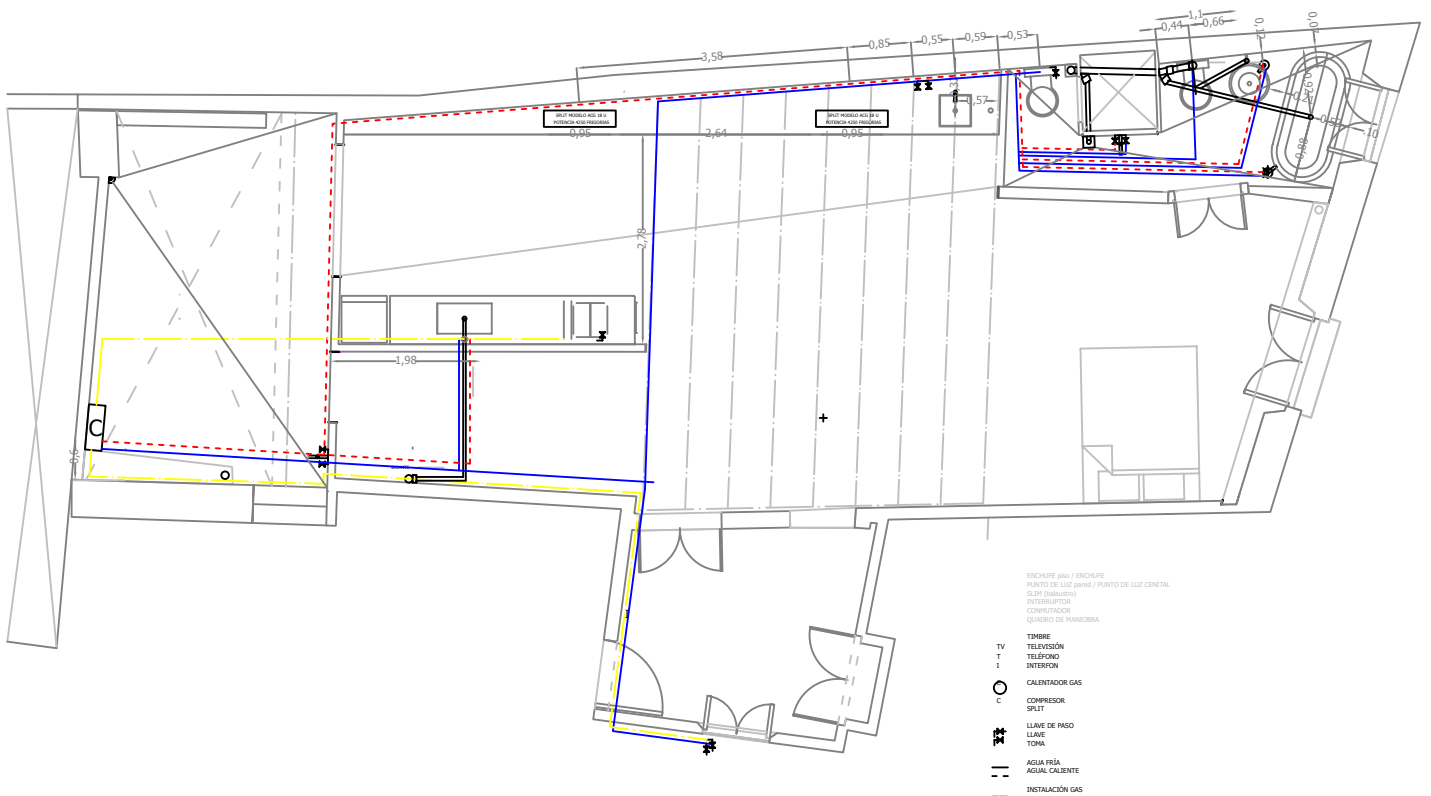


11-05_30



11-05_30

■ P. VIEW_WATER-SANITARY-AC INSTALLATIONS_HDS_1-2-06





10-05_bathroom



10-05_bathroom passway-vaults

■ HYDRO SANITARY

■ Sanitary

Sanitary evacuation installation in Bathroom area and connection to the existent mains.

Sanitary evacuation installation in kitchen area and connection to the existent mains.

Fibrocement sewage removed and substituted by PVC sewage

■ Plumbing

Under floor copper installations within plastic corrugated hose

Cold and hot water installation in kitchen area for sink, dish washer and its connection to the existent mains.

Cold and hot water installation in bathrooms for 2 wc, 2 showers, 2 sinks, one bathtub. Installation of bathroom fittings and boiler and their connection to the existent mains.

■ Gas

New gas copper installation protected with galvanized steel in terrace and set up according with the normative.

Connected to city gas supply.

JUNKER WR-11B_11 lts/min.



2-06_16_wc

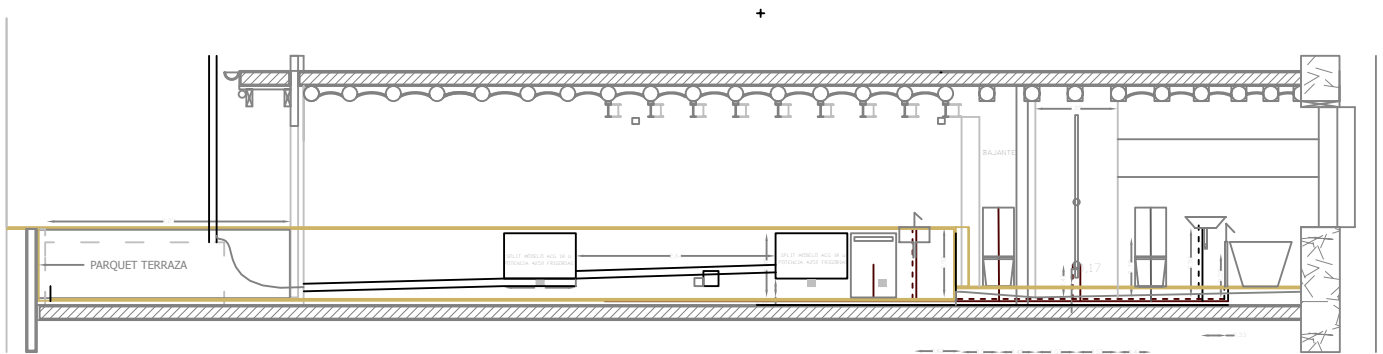


2-06_16_main bathroom



2-06_15_bathroom from bedroom

■ BATHROOM -PARTY WALL ELEVATION_HIDROSANITARY_21-3-06



— AGUA FRÍA
 - - - AGUA CALIENTE



2-06_16_bathroom



3-06_23_gas

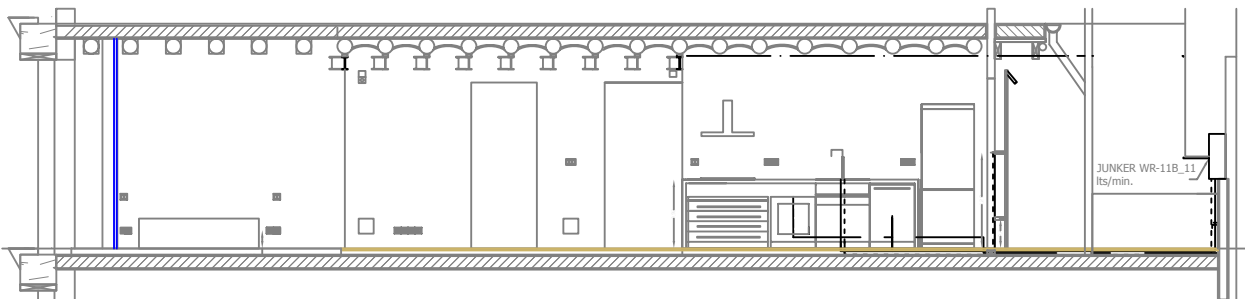


8-08_28_patio installations



8-08_28_heater and counter

■ KITCHEN-FOYER WALL ELEVATION_HIDROSANITARY_21-3-06



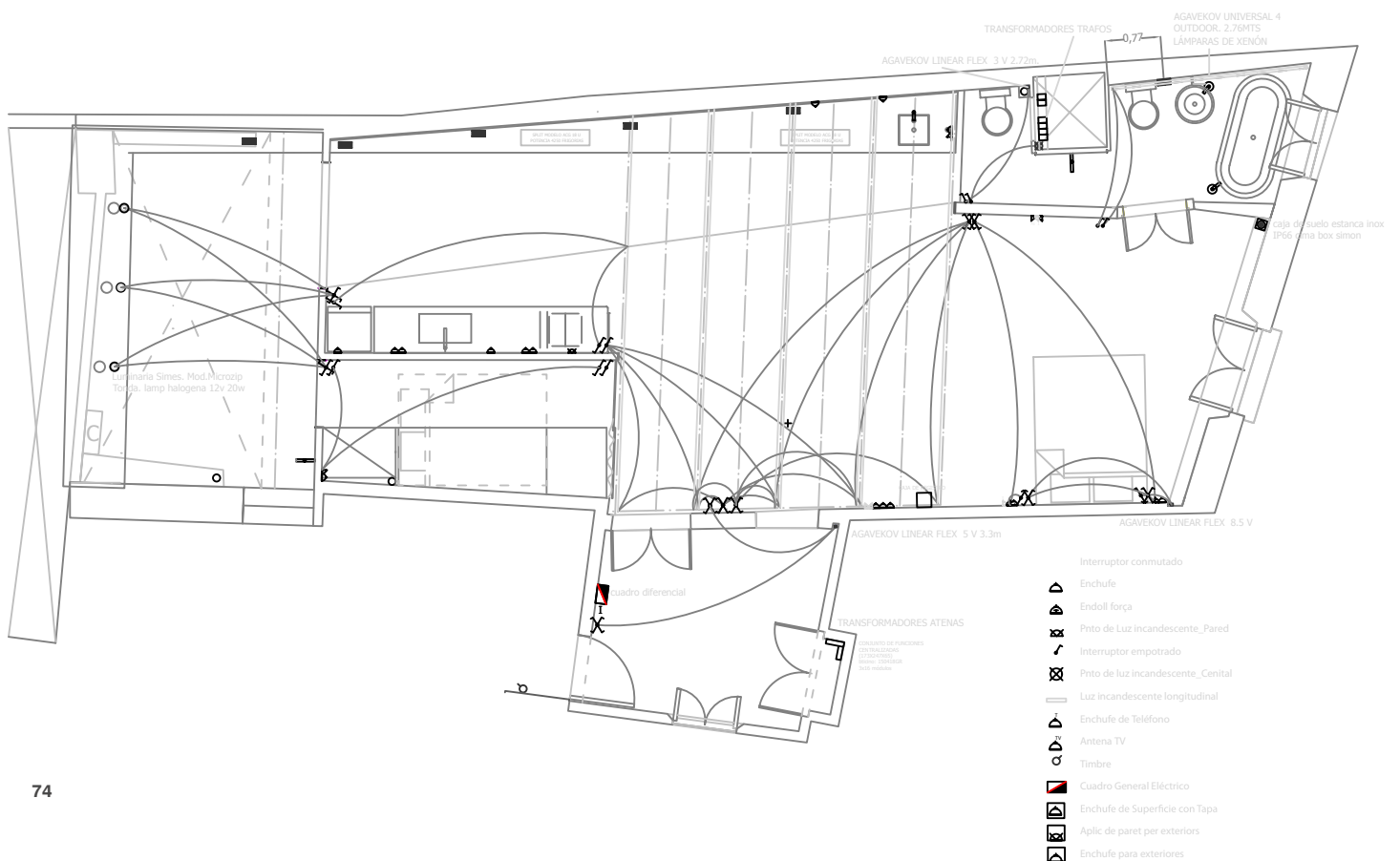
■ ELECTRICITY

New electricity installation with corrugated tubes and cable of 2.5 mm for plugs 1.5 mm for switches, coaxial digital cable for TV, telephone cable including 3 telephone plugs, cable of 6mm for oven, cable of 4mm for disher and washing machine.
 Cable of 16mm for the electricity attack with rigid tube, counter box, ICPM box, PIAS and Diferencial with fuses of 63A.



11-05_30

■ P. VIEW_ELECTRICITY-DOMOTICS-AC INSTALLATIONS_HDS_21-3-06



■ AIR CONDITIONING

Technician: Antonio
 Provider: Serveis Martin

MITSUBISHI ELECTRIC. INDOOR MFZ-KA25VA
 SPLIT MODELO ACG 18 U
 POTENCIA 4250 FRIGORIAS

■ DOMOTICS

Precedents:
 David De la Mora
 www.security-tech.com.mx

Automated distance control on access, fridge, oven, speakers, ac, lighting, tv, tel-camera.

Tubes and pipes already set. Wiring installations missing

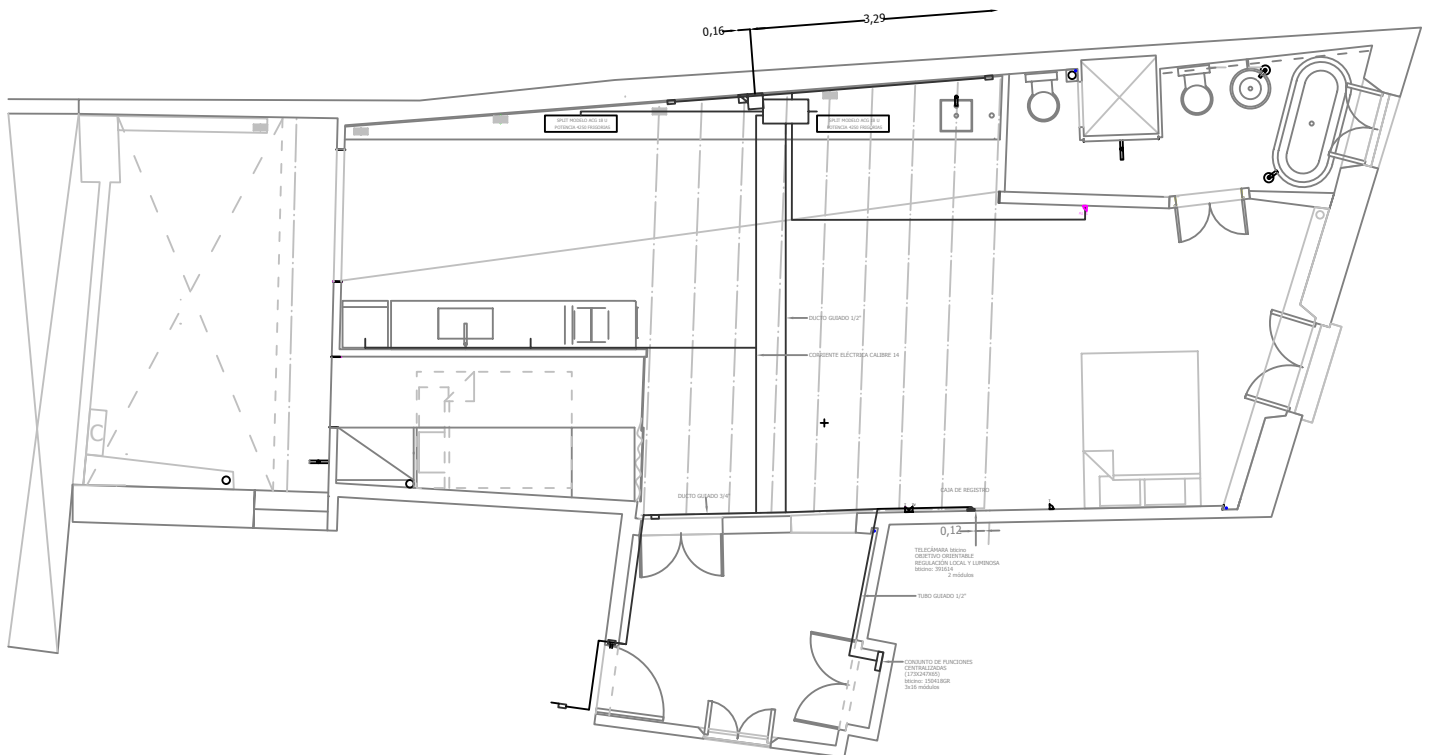
TUBO GUIADO 1/2" / DUCTO GUIADO 3/4" /
 CORRIENTE ELÉCTRICA CALIBRE 14



12-05-7



■ P. VIEW_DOMOTICS-AC INSTALLATIONS_HDS_21-3-06





2-06_16_foyer



2-06_16_kitchen

Bticino. Magic

Provider:

Matas Ramis

G. Via Corts Catalanes, 561, Barcelona,

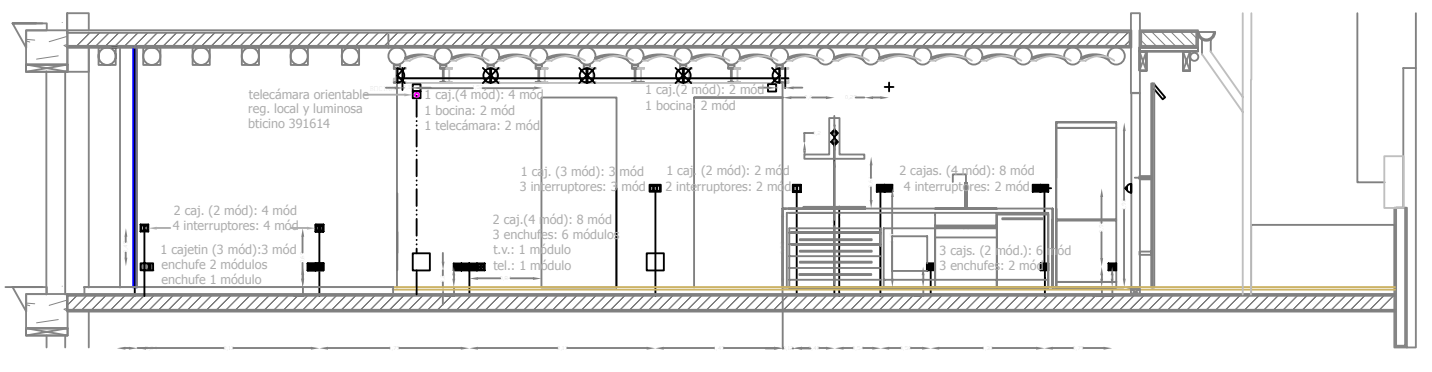
7 cajetines 4 módulos/ 1 cajetin de 4 módulos para cámara y bocina/
2 cajetines 3 módulos/ 17 cajetines 2 módulos / 3 cajetines para bocinas 2 módulos

22 enchufes trucos 2 módulos/ 4 enchufes 1 módulo

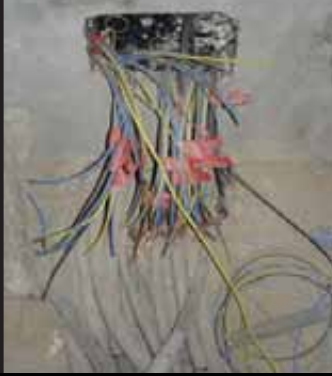
27 interruptores: 1 módulo/ 4 enchufes 1 módulo

2 t.v. 1 módulo/ 3 tel.1 módulo

■ kitchen-foyer wall elevation_electricity_21-3-06



- INSTALACION GAS
- ENCHUFE PARED
- INTERRUPTOR
- INTERRUPTOR DOBLE
- AGUA FRIA
- - - AGUA CALIENTE
- || DESAGUE



2-06_16



12-05_7_bedroom

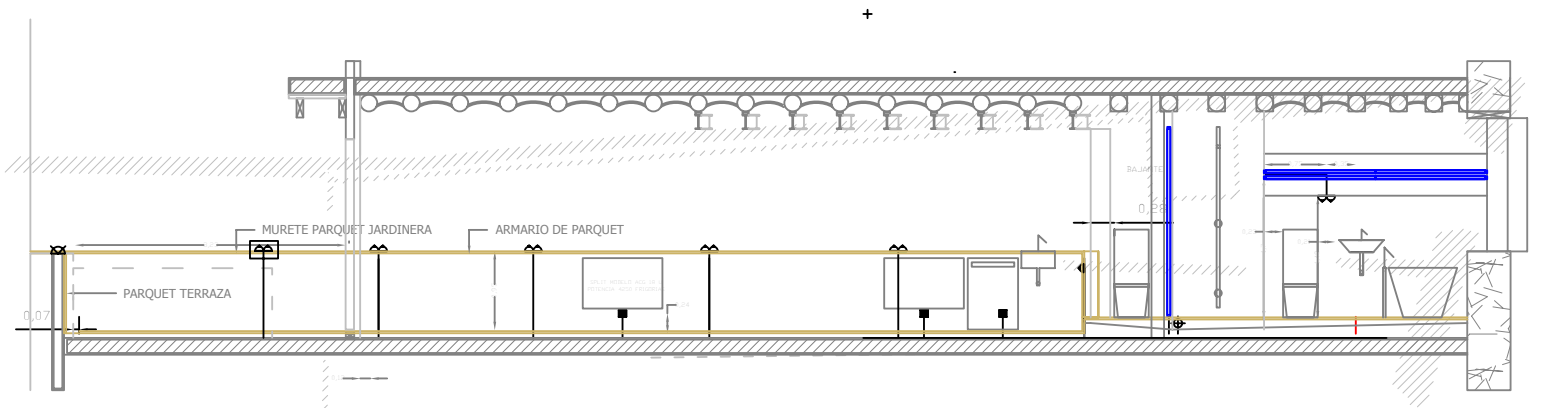


12-05_7_bathroom

1 caja de plástico estanca 4 módulos/ 1 caja de plástico 3 módulos/ 1 caja de plástico 2
1 caja de suelo estanca inox

CONJUNTO DE FUNCIONES
(173X247X65)
bticino: 150418GR
3x16 módulos

■ BATHROOM-PARTY WALL ELEVATION_ELECTRICITY_21-3-06



ID: Diferencial

1:C16 Alumbrado / 2:C16 Vigas Alumbrado / 3:C16A Domótica / 4:C10A Oficina / 5:C10A Nevera

ID: Diferencial 40-30

1:C20 Aire / 2:C25 Horno / 3:C20A Lavadora, Lavavajillas / 4:C16A Enchufes baño y Cocina

ID: Diferencial 40-30 / 1:C10 Alumbrado / 2 C16 Enchufes casa

■ 8-08_28_breakers_legend





8-08_28_foyer



8-08_28_well



8-08_28_well-2

■ LIGHTING

Precedents:

Slim

<http://www.stylepark.com/es/belux/slim01>

In Situ:

Manufacturer:

Agavekov

<http://www.agabekov.com/>

Distributor:

Ca2L www.ca2l.com

Santi Roses

Marta

Lighting was conceived to stress continuity among the foyer, main bedroom and bath room areas. Their voltage was calculated in function of different surface areas to light in order to create a similar intensity. Their position was carefully tested to guarantee the maximum exposure of the restored and recovered material textures.

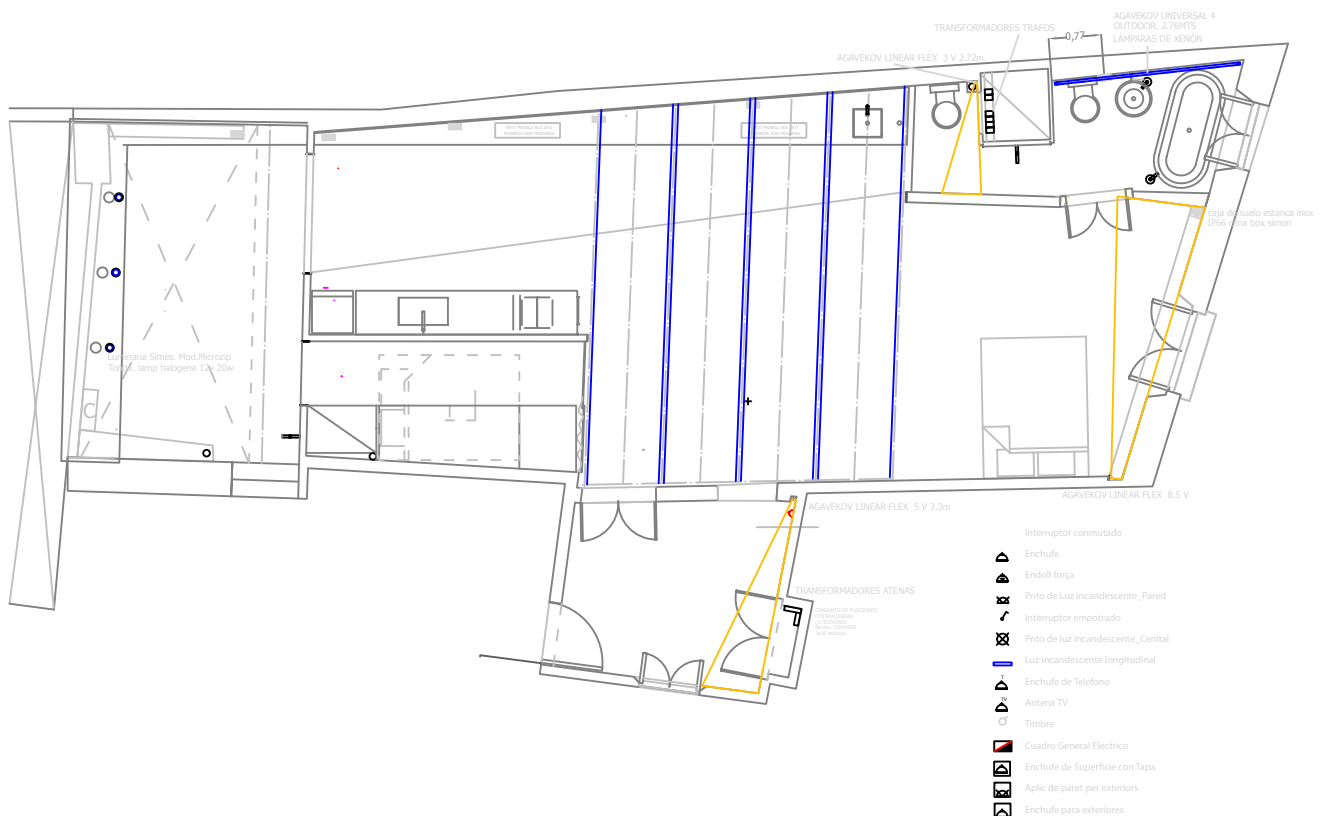


3-06_23_main bedroom



3-06_23_main bedroom 2

■ P.view_lighting_HDS_21-3-06





3-06_23_foyer



3-06_23_foyer 2

■ LIGHTINGN TYPE

AGAVEKOV UNIVERSAL 4 OUTDOOR. 2.76MTS

LÁMPARAS DE XENÓN

AGAVEKOV LINEAR FLEX 3 V 2.72m.

AGAVEKOV LINEAR FLEX 8.5 V

AGAVEKOV LINEAR FLEX 5 V 3.3m

6 TRANSFORMADORES TRAFOS

LUMINARIA SIMES. MOD.MICROZIP TONDA. LAMP HALOGENA 12V 20W

■ IRONWORKS

Iron workers:
Willmert, Segio, Juan, Herrero Viladomat

Lasser Cut for foyer frame: Oxicorte, Francisco Carrasco

Providers: Iron cross sections
Ferrobric, Castells Vila Seca

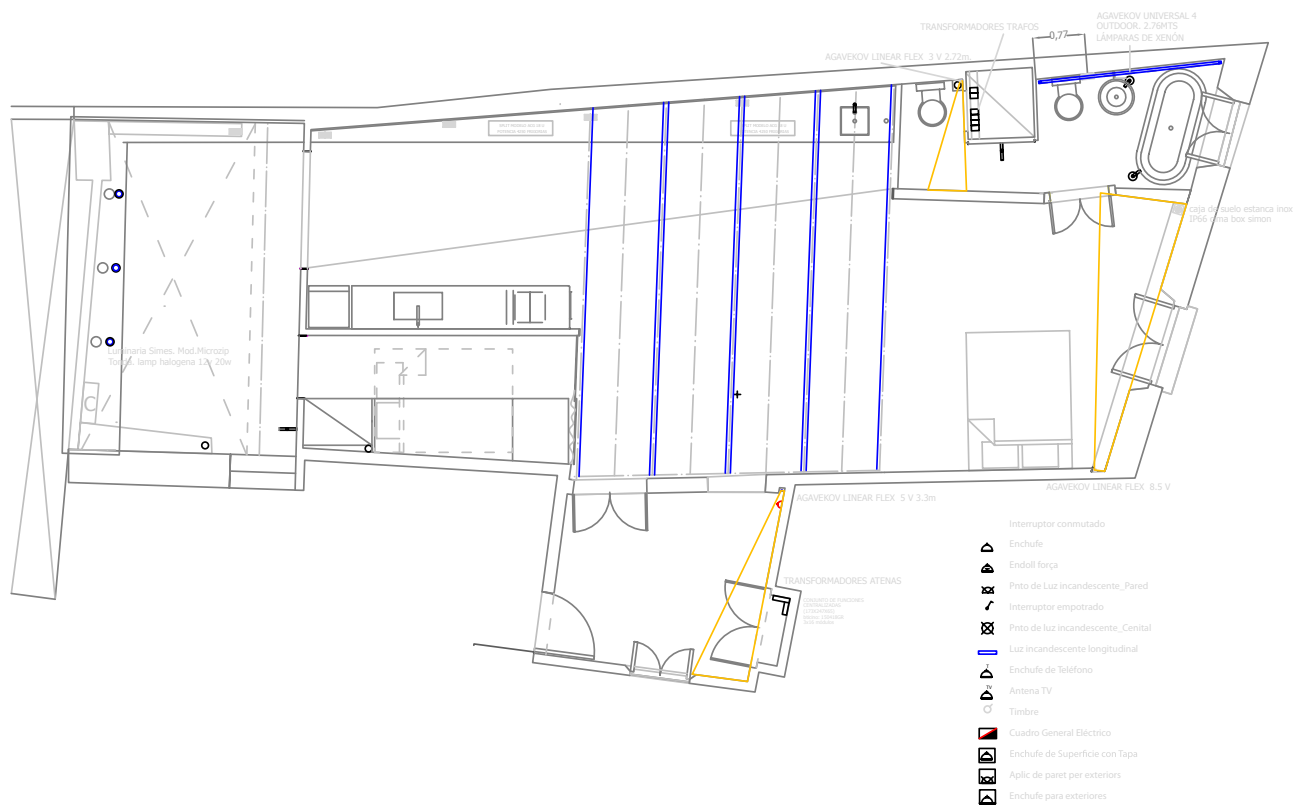


3-06_8



3-06_23

■ P. VIEW_IRONWORKS_H.D.S.





2-06_16



2-06_16-



5-06

■ WALLS

Iron strips (40x4 mm) were welded and set in walls for protecting the edges and renderings.

■ FLOOR

T's iron cross sections (40x40x4) were welded and set in the floor as joints to avoid concrete cracking.

■ BATHROOM

Angle iron cross sections (40x40x4 mm) were set on the edges of the shower plate as support and contention for the parquet.

■ COVERS

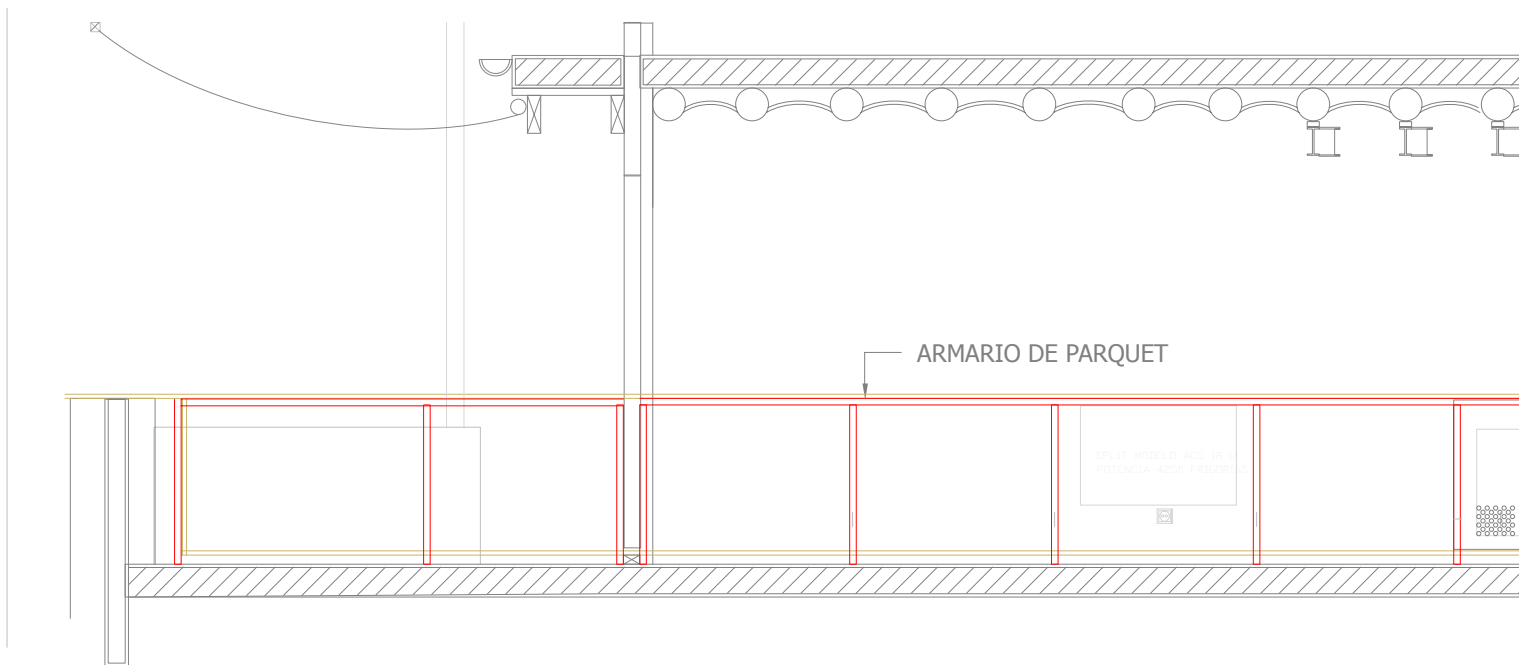
Storage space will be assembled by Angle iron cross sections (40x40x4 mm)
With sliding perforated metal sheet doors inside and doors made of iron tube 40x40x4mm to support
parquet at the terrace.

<http://www.aginter.com.ar/Redondas.htm>



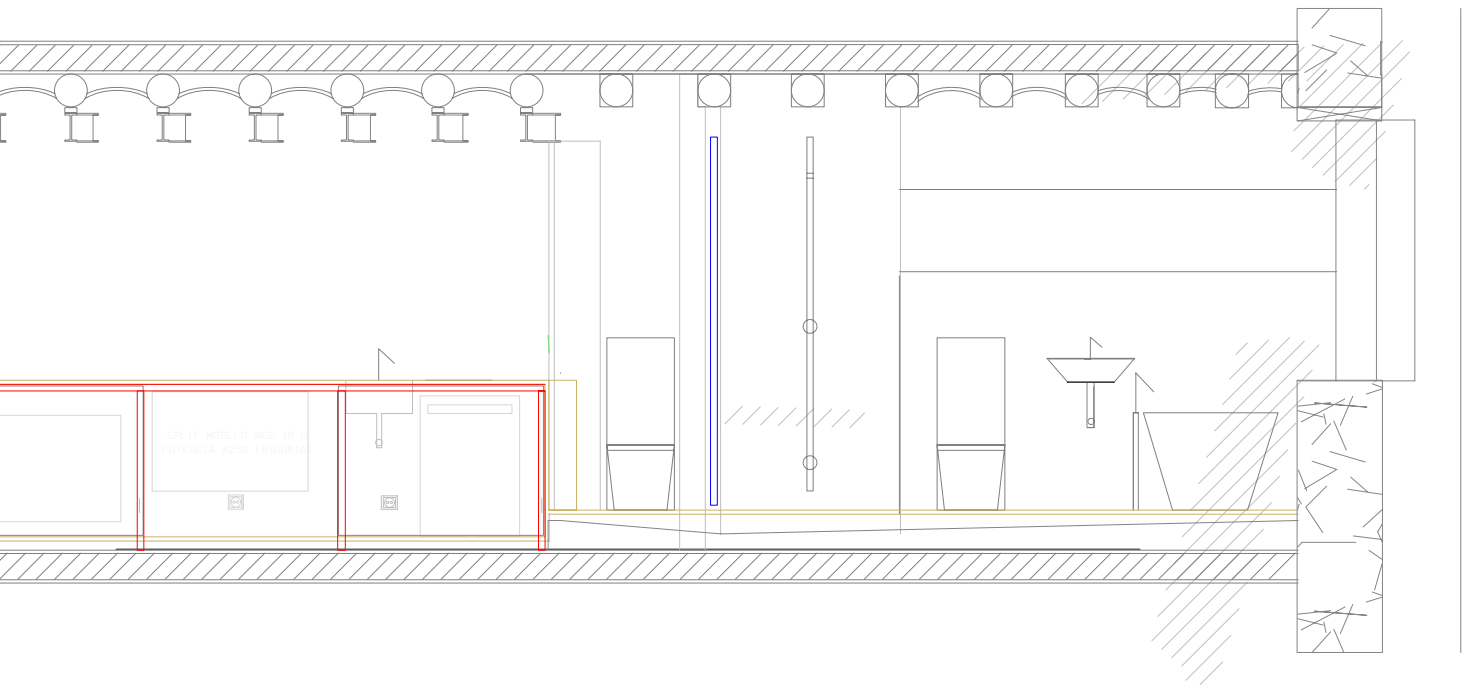
5-06_foyer

■ ELEVATIONS_IRONWORKS_H.D.S





6-06_21



■ PARKET

Precedents

Juan Carlos Jaramillo

Parket House

Masaranduva / IPE wood stips 10-12 X 2,2 CM in floor and partition

In Situ

Fábrica de Parquets

Xavier Rodriguez

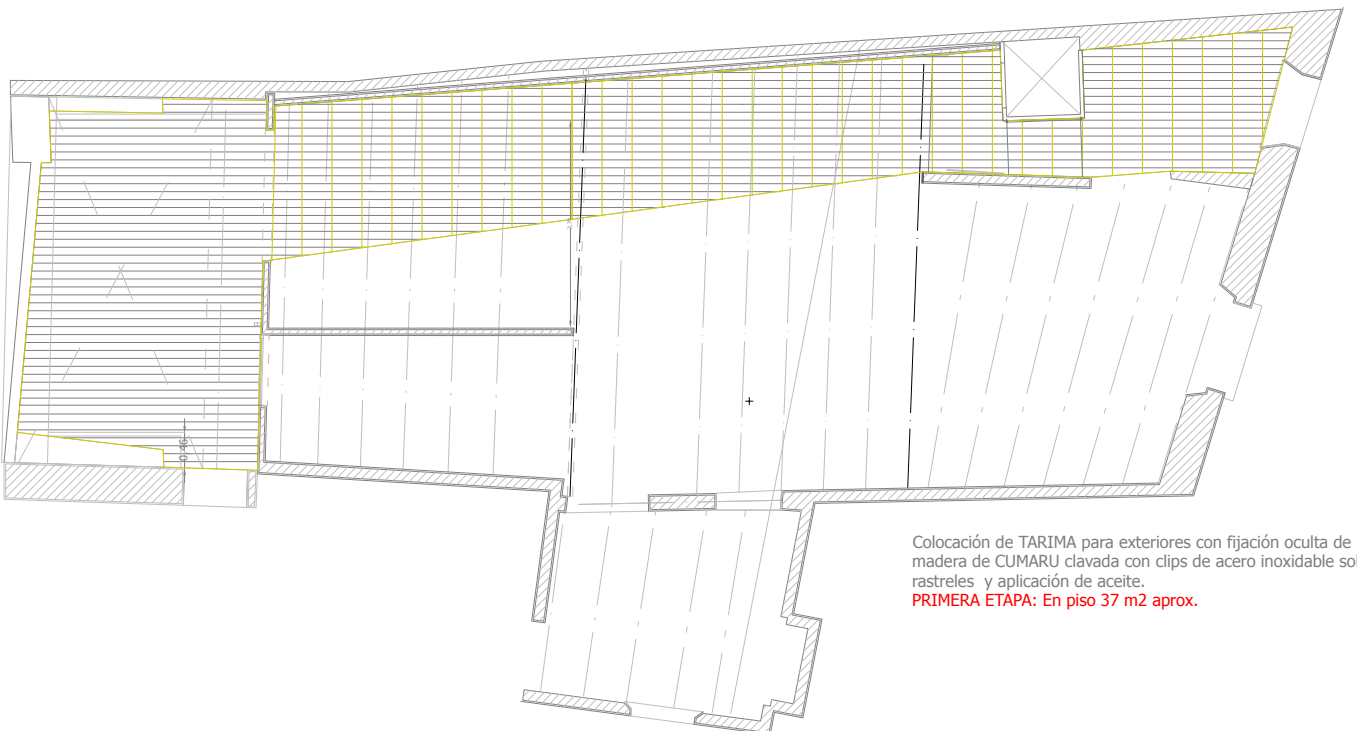


4-06



5-06_23

■ PARKET-FIRST STAGE_6-4-06



Colocación de TARIMA para exteriores con fijación oculta de madera de CUMARU clavada con clips de acero inoxidable sobre rastreles y aplicación de aceite.

PRIMERA ETAPA: En piso 37 m2 aprox.



4-06_dafne



5-06_23_bathroom



5-06_23_tint

■ CUMARU PARKET FOR EXTERIOR

Terrace: 14.4 M2
Interior: 23.15 M2

14,4 m2. aprox. Nivelar terraza con rastreles de pino cuperizado a cada 60 cm..

23,15 m2. Colocación rastreles de 50x30 cm. atornillados a pavimento para posterior colocación de parquet.

15,9 m2. aprox. Colocación de rastreles de pino cuperizado en muro terraza y baño.

53,45 m2. aprox. Colocación de TARIMA 10 cm para exteriores con fijación oculta de madera de CUMARU con unión macho-hembra clavada con clips de acero inoxidable sobre rastreles en terraza, piso y en muro terraza y muro baño y aplicación de aceite.Z

■ PARTITIONS

GLASS, bedroom, bathroom, and shower

Precedents

Lumon

www.ideaterrazas.com

<http://www.lumon.com/>

In Situ:

Provider

Cristaleria Camacho

t. 93 284 6118

m. 666 521 058

e. cristaleriacamacho@cristaleriacamacho.e.telefonica.net

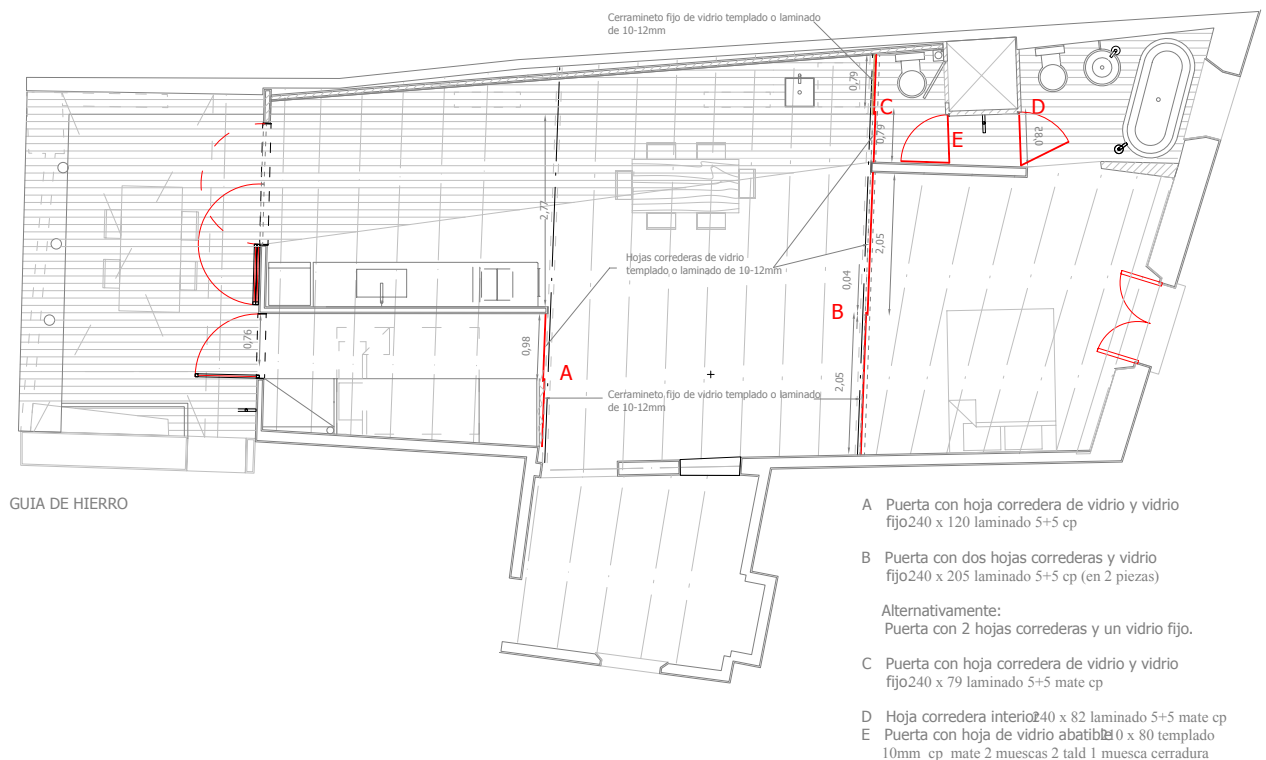


7-06_21



10-06_17

■ PARTITIONS 7-7-06





4-06_dafne



5-06_23_tint

5-06_23_bathroom

■ BATHROOM

2 sliding glass doors
1-250 x 95 laminated 10 mm 5+5 cp
1-250 x 95 laminated 10 mm 5+5 cp 1 taladro 1 knob
klein guide roll glass 85
<http://www.kleiniberica.com/>

■ BEDROOM

2 sliding glass doors
1-260 x 78,5 laminated 10 mm 5+5 mate cp
1-260 x 78,5 laminated 10 mm 5+5 mate cp 1 drill 1 knob
klein guide roll glass 85

■ SHOWER

2-197,5 x 73,5 template 10mm cp 2 hitches, 1 drill 1 knob. Weight: 40 k

■ GUIDES

Manufacturer
Klein
klein guide roll glass 85
<http://www.kleiniberica.com/>
http://www.kleiniberica.com/klein/website/upload/ROLLGLASS5585BASIC_t.pdf

■ GLASS ACCESORIES:

Hitches in shower door:
Vitrum s.a. Bisagra lateral 6/10 mm (3002) cod. 01922PM

■ NEW LOCK SYSTEMS

Door holder 4230 stainless steel: 3 units 4230 Inox 10 mm
Doorknobs 2329 07nobs stainless steel: 4 pairs 232907 inox 10 mm
http://www.fsb.de/StaticPages/Downloads/2006/Handbuch/FSB_ENG06-3c_Knobs.pdf

■ VINYL SCREENS

RTV Rotulación, Oscar Hidalgo
/ Decoración cristales con vinilo efecto ácido

■ WOOD WORKS

Balcony and Foyer

Precedents

Josep Ma. Figueras

m. 629 889 599

e. fusteriafiguera@gmail.com

Sendra, Ebanisteria I Decoracio

Xavier Sendra i Gubianes

m. 667.49.52.03

t. 93 575 42 52

In Situ:

Manell, Alberto

Balcony doors windows with shutters including new wood frame. Double glassing "climalit"

■ CURTAIN AND BLINDS

Aluminium guide 7200



6-06_21_balcony



6-06_21_cutting



6-06_21_gluing



6-06_21

■ IRON TERRACE DOORS

Robles Segovia, José/ Isidro
Alurei, Jesús Reinaldo

A new prototype door was designed to guarantee special continuum between the apartment and terrace.



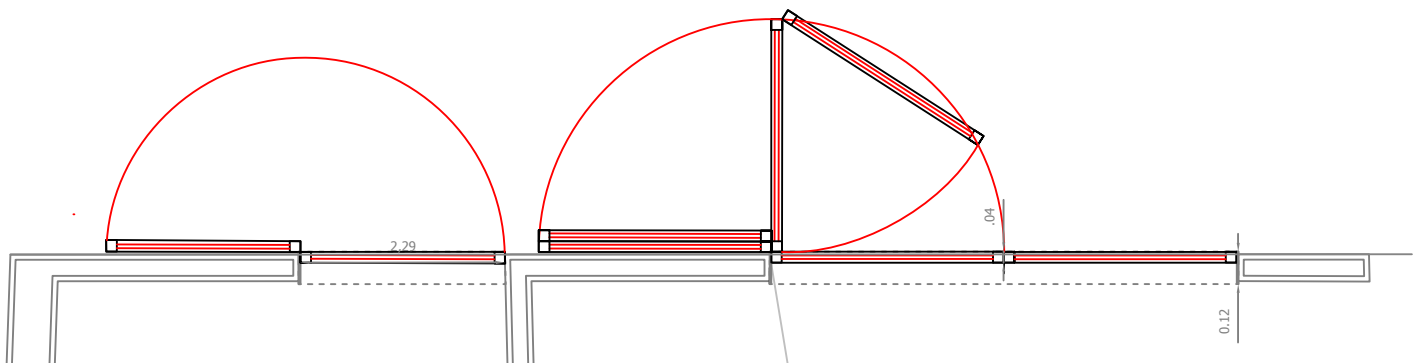
4-06



5-06_23



■ PARTITION_DETAIL DOOR TERRACE _30-3-06



CARPINTERIAS DE HIERRO ABATIBLES
CON DOBLE VIDRIO.

MARCO
DE
HIERRO.
MÍNIMA
SECCIÓN
POSIBLE



6-06_21



9-07_11



11-06_14

■ DOOR DETAILS

Double hinged double sheet door of 199 mm x 2100 alto. Glass 4/c/5
Hinged door of one sheet 900 mm x 2100 mm

Cross section profile: Perfiles de carpintería metálica 5851 kg/m 1.40; 5853 kg/m 1.77

■ RESTORATION

.....

Precedents

SENDRA
EBENISTERIA I DECORACIO
Xavier Sendra i Gubianes
Tel. 667.49.52.03 – 93 575 42 52

In Situ
Liz

Decapados Baena

Works description:
Balcony door, bathroom access door, foyer door, foyer window, bathroom railing and frame, bathroom window and foyer cupboard restoration.

■ BEFORE



7-05_26_balcony door



7-05_14_bathroom railing



10-05_31



2-06_20_de capating



12-05_7_bathroom window



12-05_7_foyer door

■ WORKS DESCRIPTION:

Wood cleaning, cleaning of rusted iron fittings, gratings (pino de melis), staining and varnishing (poliuretanos al agua de acabado mate) with oil, tapaporos, gomalalca), wood planning, wood de capping
Double glassing on balcony door, bathroom and foyer window.



7-05_14_foyer door



7-05_14_terrace railing



12-05_1_cleaning



2-06_16_staining



12-05_7_foyer window



6-06_21_bathroom railing



6-06_21_foyer window



7-05

■ BEFORE AND AFTER

■ BATHROOM

Manufacturer:
Hoesch (free standing tub with outside covering)
<http://www.hoesch.de/index2007.html>

Duravit
Axor

Distributor:
Aliaga (free standing tub with outside covering)
Catalonia Ceramic
www.catalonia-ceramica.es

Bathrooms are spatially organized around a former well still visitable. The main shower is shared by the main and secondary bathrooms allowing flexibility of use while maintaining the original character of transit of the former pass way from the original distribution. Plumbing and installations were designed to emerge from underneath of the wood floor to keep exposed walls free from any fixtures. The main bathroom, beside the stone façade, is privileged with a bathtub that. Both bathrooms comprise Phillipe Starck's designed sinks, toilets and showers.



04-06_27



e+h_r.c.a_11-06_14



9-07_11_bathroom railing05_31



■ OBJECTS

Philippe Satrck, Edition 2, free standing tub with outside covering

<http://www.qualitybath.com/product~name~Hoesch+Philippe+Starck+Edition+2+6136~ID~33600.htm>

Bath mixer (Axor)

Satinox Bath Mixer_Basic set: 10452180_handshower:10458_hose:-000_shower holder:-810

WC Starck 1 (Duravit)

WC: Seat and Cover: 0065810000_Toilet: 0233090000_Cistern: 87270000

http://www.duravit.es/productos/series/starck-1/inodoros/inodoro-de-pie-para-tanque-bajo--023309_toilets_93179_useo6q3rt3.html

Wash basin: (Duravit)

http://www.duravit.es/productos/series/starck-1/lavabos/lavabo-sobre-encimera--044753_washbasins_93162_useo6q3rt3.html

Bathroom mixer (Axor)

Satinox Basin mixer_Basic set: 10452180

http://www.hansgrohe-int.com/int_en/2185_31303033395F31385F3338373537.htm

Showers (Axor)

Satinox Shower colum with Twin-handler mixer. 10905,-000,810_Basic set: 10902180

http://www.hansgrohe-int.com/int_en/2145_31303035345F31385F3338373931.htm

Sifón Totem Fundido Cromo



9-07_11_shower



8-08_22_main bathroom



7-06

■ BEFORE AND AFTER

■ KITCHEN

Precedents:

Berceli

bulthaup

<http://www.bulthaup.com/>

Design: Dafne De la Mora

Manufacturer :

Celaya Torraneulaser

Description:

The kitchen emphasizes the directionality of the space and brings a blurring perception with it's Stainless Steel finishing. The organisation design reinforces the inside-outside continuum of the project, stressing the linearity of the space and maximising its flexibility with a minimum surface
3285 long x 640 deep x 950 height: 2 m3.



celaya blanes_08-06_26



lifting up_10-6_2



lifting up-11_10-6_2



■ OBJECTS

Manufacturer:

Smeg

<http://www.smeg.es/Catalogo/Catalogue.aspx>

Distributor:

Electronorma Milar

The structure was conceived so appliances sink and faucet could fit.

SMEG appliances:

Dish-washer LSA-14

Oven S-381X5

Sink VSTQ-72

Stove Gas Mark SR-34ASX

Refrigeretaor FA-350X.



lifting up-12_10-6_2



DAFNE+CELAYA TEAM_10-6_2



installed -2_10-6_2



7-05

■ BEFORE AND AFTER

■ TERRACE

.....

Manufacturers and Canopy sponsors
Toldos Condal: Sandra Martín, Ivan

■ CANOPY

Screen 42% fiber glass 58% pvc
Thickness: 1/100mm:75
Opacity:6/7



10-06_10



10-06_10-3



10-06_10-6



■ OBJECTS

Manufacturer:

Smeg

<http://www.smeg.es/Catalogo/Catalogue.aspx>

Distributor:

Electronorma Milar

The structure was conceived so appliances sink and faucet could fit.

SMEG appliances:

Dish-washer LSA-14

Oven S-381X5

Sink VSTQ-72

Stove Gas Mark SR-34ASX

Refrigeretaor FA-350X.



10-06_10-7



10-06_10-2

■ MATERIALS AND TOOLS

.....



2-06_



2-06_16



5-06_23_sanding



5-06_23_tint



10-6_2_lifting



10-6_2_lifting2



3-06_8_ hormigon arlita



3-06_8_preparacion hormigon arlita



6-06_21_cutting



6-6_23



10-06_3_foam



10-06_3_staples



12-07_xylofusta

■ DETAILS

.....

■ BATHROOM AREAS



9-07_11



2-06_16



9-07_11_iron-parquet bathroom



9-07_11_glass door shower-lock



9-07_11-above shower



9-07_11_shower left-iron-parquet



9-07_shower right-iron-parquet



9-07_11_shower



9-07_11_shower detail



1-07_bathtub



6-06_23_double glassing bathroom

■ FOYER



3-07_10_foyer



6-06_21_foyer lock



6-06_21_main door



8-08_28_lock

■ TERRACE



9-07_11_parquet-cement pavir



9-07_11_Hitches terrace door



12-07_terrace door



11-06_10_detail

■ OTHER WORKS

.....

■ BALCONY REBUILDING



10-05_31



6-06_7



10-06_10

■ TIMBER TREATMENT



12-07_wrapping



12-07_drilling

■ WATER PROOFING



10-06_3



6-08_water proof fabric



6-05_14



4-06_3



10-06_10-



12-07_injecting



12-07_foyer



12-07_foyer-



6-08_water proof painting



6-08_water proof painting-2

■ MAKING OF

■ PHOTOGRAPHY: IÑIGO BUJEDO

www.inigobujedo.com

Camera and equipment: Camara Hasselblad 501of 6x6 cm, angular lens of 60 mm

Lighting equipment: One set of 2 mono block flashes Spirit Bowens of 500 W.

Shots: 12

Total hours invested:

Shootings: 8 hrs

Edition: 7 hrs

All photographs were manually digitalized on high resolution with a EPSON Scanner.

Stylist: Dafne De la Mora

Support: Adrian Beltrán



12-07_wrapping



12-07_drilling

■ MAKING OF

■ PHOTOGRAPHY: MARISA ITURBIDE 04-07_16-18

http://www.xing.com/profile/Marisa_Iturbide2

Para LOTTUSEEN catalogue image and magazine
<http://www.lottusse.com/?idioma=esp>

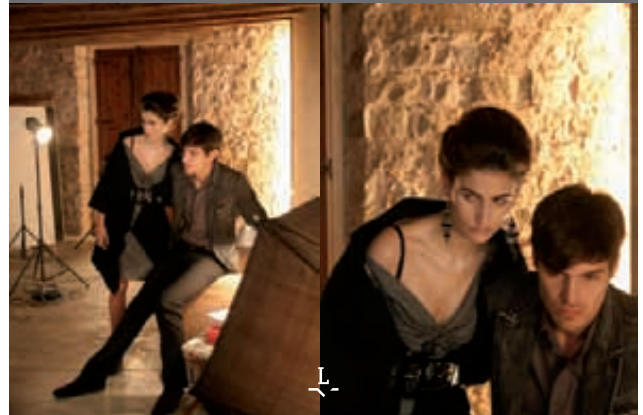
04-07_16-18



LOTTUSSE
1877



FALL WINTER 2007



■ MAKING OF

■ PHOTOGRAPHY: JORGE RANGEL 06-08

www.jorgerangel.com
Para "Cocinas y Baños"

http://www.rba.es/publicidad/revista.jsp?ID_REVISTA=55



06-08





■ MAKING OF

■ PHOTOGRAPHY: ALICIA MARTORELL

<http://www.aliciamartorell.com/>

For Taschen - Evergreen
<http://www.taschen.com/>



06-08





■ MAKING OF

.....
■ PHOTOGRAPHY: AZUL BARCELONA



10-06_23_bathroom



10-06_23_shower



10-06_23_main bathroom



10-06_23_bedroom-balcony



10-06_23_bedroom-balcony-tv



116

10-06_23_from bedroom to bathroom and terrace



10-06_23_bedroom



10-06_23_kitchen to bathroom



10-06_23_dinning to bedroom-bathroom



10-06_23_kitchen to terrace



10-06_23_dinning to kitchen



10-06_23_living to bedroom



10-06_23_terrace-bedroom



10-06_23_terrace

■ MAKING OF

.....

■ PHOTOGRAPHY: RENT CITY



11-06_14_12



11-06_14_13



11-06_14_5_main bedroom and balcony



11-06_14_4_bathroom-terrace



11-06_14_1_pavings



11-06_14_9_bedroom06_23_bedroom



11-06_14_8_kitchen to bathroom



11-06_14_6_living and dining



11-06_14_3_mian bedroom



11-06_14_7_dinning



11-06_14_7_dinning-kitchen-bedroom



11-06_14_11



11-06_14_10

Post Edition Ricardo Solar









Cost and Payments

Registro de la propiedad:

Owners:

Dafne De la Mora Hernandez

Juan Carlos Sánchez Tappan

Sección 2ª, No: 4912, Tomo 3223, Libro 189

Tasación:

26-05-2005: 336.100,00

07-12-2005: 423.545,93

Valoración Engels & Voelkers:

07-2008

Precio de Venta por valor entre 669.300 y 708.100

Buying cost:

15-04-05

Advance: 18.000,00

15-07-2005

Mortgage:

Subrogación caja Cantabria: 266.505,31

Comisión Subrogación: 796,02

Compraventa: 22.189,41

Provisión de fondos: 23.566,00

Comisión de apertura PH: 150,00

Cash: 23.500,00

Total: 354706.74

Cost of Site Works: 40.945,00

Cost to equip the flat: 27432

Cost of furniture and appliances: 14268

Photography and graphic design: 1200

Total cost: 438 551.74





Maintenance

Suggestions for Optimum Terrace Maintenance

■ IRONWORKS

Frequency: Each 2 years

To avoid: Peeling of the painting / rusting

Treatment/ product: Sanding: Medium sand paper /Painting: Black "Oxiron" exteriors

■ PARQUET

Frequency: Twice a year at least (BCN weather conditions)

To avoid

Wood dehydration/ wood bent

Treatment/ product:

Cleaning: water and (cerdas naturals) brush

to recover/ recovering gel & brush _ to apply recovering gel over the teak wood with a brush_ leave 20 min_

remove the product with water and brush_ leave to dry

To protect/ teak oil & brush _ to apply minimum 2 hands of oil with a brush_ to dry 24 hrs between 1st and 2nd hand

Important

* to clean tools with soap & water

* to follow the manufacturer instructions of product manipulation and storage.

■ SHOWER / ZINC

Frequency: Once a week

To avoid: Salt marks/ rust spots of acid rain

Treatment/ product: Cleaning / "Viakal" & cloth

Important:

* Follow properly manufacturer instructions of time

* Ensure to rinse with enough water, in order to remove the hole product after cleaning

* Avoid sun-hours when cleaning-because of marks

■ IRON PARTITIONS

Frequency: When necessary

To avoid: Salt marks in glassing/ difficulty in manipulation of mechanism

Treatment/ product: Glass cleaning / "Viakal" & cloth_ follow instructions of manufacturers; Oiling mechanism: industrial oil for heavy duty mechanisms.

■ CANOPY

Frequency: When necessary

To avoid: To become ingrained with dirt

Treatment/ product: Cleanning: Water pressure or when necessary free PH shampoo & sponge_ remove the dust with hose and follow the instructions of shampooing and removing any soap residue.

Important

* Remove canopies and sail when raining or wind blowing, as its structural design and material properties have been thought for shade and sun protection in sunny days; although water prove, rain or air could brake the fabric.





Inventory Suppliers

■ COMPANIES

■ IKEA

agen_bambu-rota chair_23.95
alseda_puff_60x18_21.95
final_lamp_halogen lights_9.99

flytta_kitchen trolleys_198xw57xh86
grundtal_hanger_inox_1.99
grundtal_toliet paper holder_inox_4.99

hjuvik
malm dresser_191x42x90_129
malm_double bed_160x200_169

ps havet_sofa bed_160x205_429
racken tissue container_inox_6.99
racken trolley_inox_39.95

rackentissues_inox_39.95
tupplur_blind 100x195cm_acrilic plastic_19.95euros

■ HABITAT

Umbria 180x75x90
alexis_Mini perchero de barra_90x118x38cm_59

■ VINZON

Artemide. Tolomeo Pinza





Collaborators

■ SOFAR

■ RICARDO SOLAR:

FPC/BAC-Texas A&M student Foreign Abroad Program Drawing SOFAR Internship during the final phase of the site works. Spring 2008 Drawing, Project Documentation e. ricardosolar500@yahoo.com

■ GUILLERMO

Computer Technician Technical Support

■ JOSEP SEDANO DE FONT

Milkmandisseny, Graphic Design and Media. e. [HYPERLINK "mailto:jsf@milkmandisseny.com"](mailto:jsf@milkmandisseny.com) jsf@milkmandisseny.com www.milkmandisseny.com

■ IÑIGO BUJEDO

PHOTOGRAPHY Ltd. Architecture photographer since 1997 Shooting and edition L.E.P. e. [HYPERLINK "mailto:inigo@inigobujedo.com"](mailto:inigo@inigobujedo.com) inigo@inigobujedo.com [HYPERLINK "http://www.inigobujedo.com"](http://www.inigobujedo.com) www.inigobujedo.com





Directory

Site Works

■ SITEWORKS

■ BRICK WORKS

Technicians:

Ayner Lozada Cuellar
m. 626 286 600
C/ Viladomat 148-3-2

Wilmert

m. 649 712 823

Sergio

m. 690 740 569

Providers:

Francesc Mercade, S.L.
t. 93 315 2799
a. C/ Ciutat, n. 11 Local, Barcelona

Ferretería Roca Mataró

t. 93 319 4975
c/ Argentería, 49

Unicor: Pintura

t. 93 443 10 54
a. Ronda San Pablo, 69

Casa Batista

t. 93 268 04 98
a. c/ Caputxes, 4. Barcelona 08003

Installations Technicians:

Fabio Lozada Cuellar m. (34) 649 997 137

Providers:

Electric Fittings
Matas Ramis
t. 93 451 2056
a. Gran Via, 561

■ LIGHTING

Manufacturers:

Agavekov
<http://www.agabekov.com/>

Supplier:

Ca2l
Person to contact: Santi Roses/ Marta
t.93 244 4343
<http://www.ca2l.com/> a.Passeig de Sant Joan, 10, Barcelona, Barcelona 08010

■ IRON WORKS

Technicians:

Juan, Herrero Viladomat
m. 606 416 111

Lasser Cut for foyer frame: Oxicorte

Person to Contact: Francisco Carrasco

t. 39 377 9912
m. oxicarx3.redestb.es
a. Mercuri 6/ Cornellà de Llobregat

Providers: Iron cross sections

Ferrobric
t. 93 426 9847
a. c/Sepúlveda, 134

Castells Vila Seca
t. 39331 65 00
e. ferrosastellsvilaseca.com
a. Gran Vía de les Corts Catalanes, 222-224

■ PARKET

Fábrica de Parquets
Person to Contact: Xavier Rodríguez, Ricardo
m. 629 833 060
e. comercial@frparquets.com
a. Edison, 3-5, 08210, Barberá del Vallés

Partitions

■ GLASSING

Providers:
Cristalera Camacho
Logo:
Person to Contact: Manuel Camacho, Albert
t. 93 284 6118
m. 666 521 058
e. cristaleriacamacho@cristaleriacamacho.e.telefonica.net
a.P.Nuestra Señora del Coll 126, BCN 08023
Guides for sliding glass doors:
Klein
Carlos
t. 93 575 1010
e. cial@iberica.com

Knobs and Locks
Manufacturers:
FSB
<http://www.fsb.de/English/Global/Sitemap/index.phtml>

Distributors:
New Lock Systems
Elena Renedo /Albert
t. 93 414 4041
e.fsb@newlocksystems.es
Glass fittings
Suvisa
t. 93 309 7777
e.suvisa@troc.es
Vitrum s.a.
t. 902 103 620
e. vitrum@vitrum.es
a. Córsega 108-110

RTV Rotulación

Oscar Hidalgo
t. 93 284 0925
m. 675 820 175
www.rtvrotulacion.com | info@rtvrotulacion.com
a. Santuaris, 8 | 08032 Barcelona

■ **WOOD**

Manuel, Carpenter
m. 677 890 764

Josep Ma. Figueras
m. 629 889 599
e. fusteriafiguera@gmail.com

■ **IRON**

Alurei
Person to Contact: Jesús Reinaldo
t. 93 637 44 63
m. 666 562 050
e. preinaldo@alurei.com
Robles Segovia
Person to Contact: José / Isidro
m. 626 075 280
e. roblesegovi@hotmail.com
Curtain

Decoración, S.L.
t. 93 244 4815
a. c/Marina, 128, bajos. Bcn 08013

■ **RESTORATION**

DECAPADO INDUSTRIAL
"Decapados Baena". Sucursal de Pallejà-Barcelona
t. 93 663 27 04

■ **BATHROOM**

Manufacturers:
Duravit
Axor

Distributors:
Aliaga
t. 93 241 8870
a. C/Paris, 183-08036 Barcelona

Catalonia Ceramic
t. 93 580 2000
e. c-c@catalonia-ceramica.es
a. Rocafort 112, 08015 Barcelona

■ **KITCHEN**

Manufacturer :
Celaya Torraneulaser
t. 93 451 9300
a. Comte de Urgell, 55
www.celaya.com
Person to Contact:
Octavi: 600 960 213

■ **TERRACE**

Canopy Toldos Condal
Person to contact: Ivan Sanmartí
t.93 682 1550
m.695 793 965 e. www.toldoscondal.com
Rentals:

■ **TOOLS**

HSS
Logo:
HSS
<http://services.hss.com/Spain.shtml>
Rda. de Sant Pau 61-63, 08015, Barcelona
tel: 00 34 93 442 5200
fax: 00 34 93 442 0746

Alquitodo
Logo:
Alki
<http://www.alquitodo.es/>
t. 934548878

■ **TRANSPORT**

Europlataformas
Maribel
t. 93 723 1398
Support
Brickworks
Sergio, Wilbert, Ruben
Logistics Adrian, Cato, Farith, José





Conclusion and Acknowledgments

■ CONCLUSIONS

Hostal del Sol is not only the first solo intervention of SOFAR in Barcelona. Since the very beginning intends to materialize and foster a live style that we seek as architects working and living between México and Barcelona.

The materialization of any project it's a challenge on itself. As architects, we move from a world of concepts and ideas to a world of concreteness; we are forced to go back and forth facing multiple realities, contrasting different points of view, and negotiating with various parts always with time, budget, and technical constrains. Besides the wide accepted range of our discipline ranking between art and science; through the building process architects play different rolls, we eventually become advertisement and sales agents, educators, sociologists, psychologist, translators, etc. But it is this very complexity what makes a difference in the building of ideas when it is managed and driven always in benefit of what the site wants to be. Each building process offers an opportunity to test ideas, to gain experience, but most importantly to learn from others.

■ ACKNOWLEDGMENTS

We would like to thank our families who have supported us in different ways through the whole process. Special thanks for our parents and their unconditional support. We dedicate this book to my mother, Gladys, still with us in spirit but who did not have the chance to know something that she believed in.

Thanks to Toldos Condal for their sponsorship.

Our special gratitude for all the people involved to make Hostal del Sol possible with their work, sharing their perspective, knowledge and experience.